

GROUP FR-1

POLYURETHANE AND MS-POLYMER SEALANTS THAT CAN GO OVER OR UNDER 705FR

SURE-SEAL LAP SEALANT

CCW-201

SIKAFLEX-1A & 2C NS

SURE-SEAL UNIVERSAL SINGLE PLY SEALANT

NOVALINK BY CHEMLINK

PECORA DYNOTROL I & II

SONNOBORN NP-1 & NP-2

OTHERS AS APPROVED BY CARLISLE

GROUP FR-2

SILICONE SEALANTS – APPLICATION OVER 705FR ONLY

DOW 790, 791, 795

GE SILPRUF, SILPRUF LM

PECORA 890, 8915

OTHERS AS APPROVED BY CARLISLE

GROUP FR-A

MASTIC TAPE INSULATION ADHESIVES THAT CAN GO OVER 705FR

SONNOBORN PREMIUM ADHESIVE BY BASF

P-L 300 FOAMBOARD ADHESIVE BY LOCTITE

OTHERS AS APPROVED BY CARLISLE

NOTES:

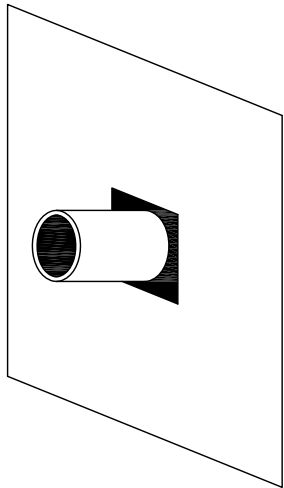
1. FOLLOW APPLICATION INSTRUCTIONS BY SEALANT MANUFACTURER
2. DO NOT INSTALL 1-PART SEALANTS INTO JOINTS EXCEEDING ½" DEPTH
3. EXCEPT SURE SEAL LAP SEALANT, ALLOW SEALANT TO CURE BEFORE COVERING WITH 705FR

705FR-0A

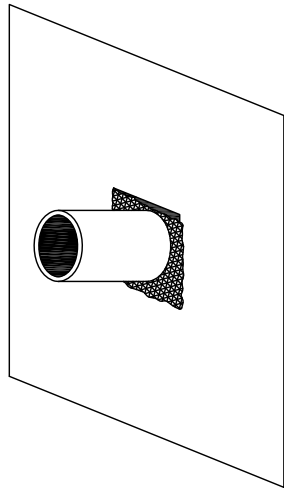
705FR
APPROVED SEALANTS



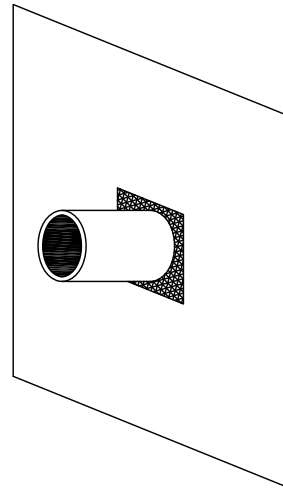
© 2012 CARLISLE CORPORATION



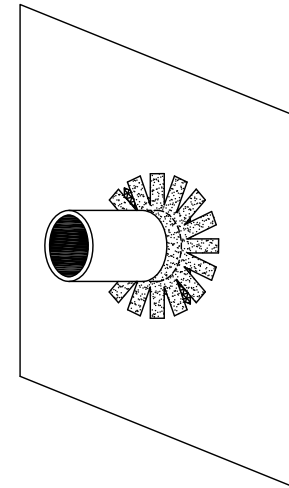
PIPE PENETRATION



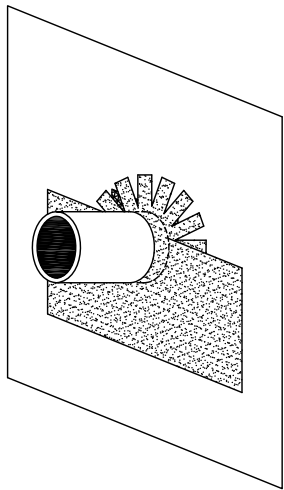
FILL TIGHTER GAPS WITH FR-1 APPROVED SEALANT. FILL ROUGH GAPS WITH EXPANDING PUR FOAM



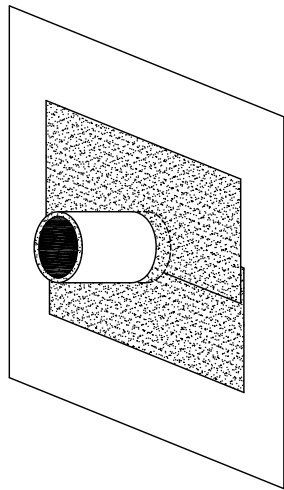
SHAVE PUR FOAM FLUSH AFTER CURE



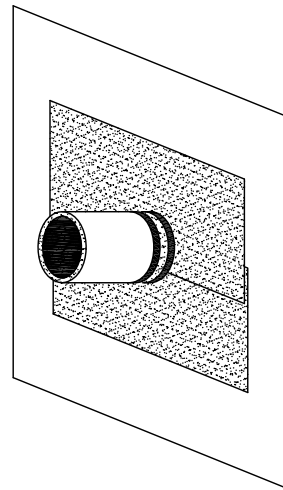
PREP SURFACE WITH CCW CONTACT SDHESIVE. DO NOT INSTALL SOLVENT-BASED ADHESIVE OVER PUR FOAM. INSTALL 705FR STRIP AROUND PIPE AS SHOWN



INSTALL 705FR STRIP BELOW PIPE



INSTALL 705FR STRIP ABOVE PIPE



SEAL TERMINATION AND PIPE BASE WITH FR-1 OR FR-2 APPROVED SEALANT

DRAWING FOR GUIDANCE. NOT FOR CONSTRUCTION

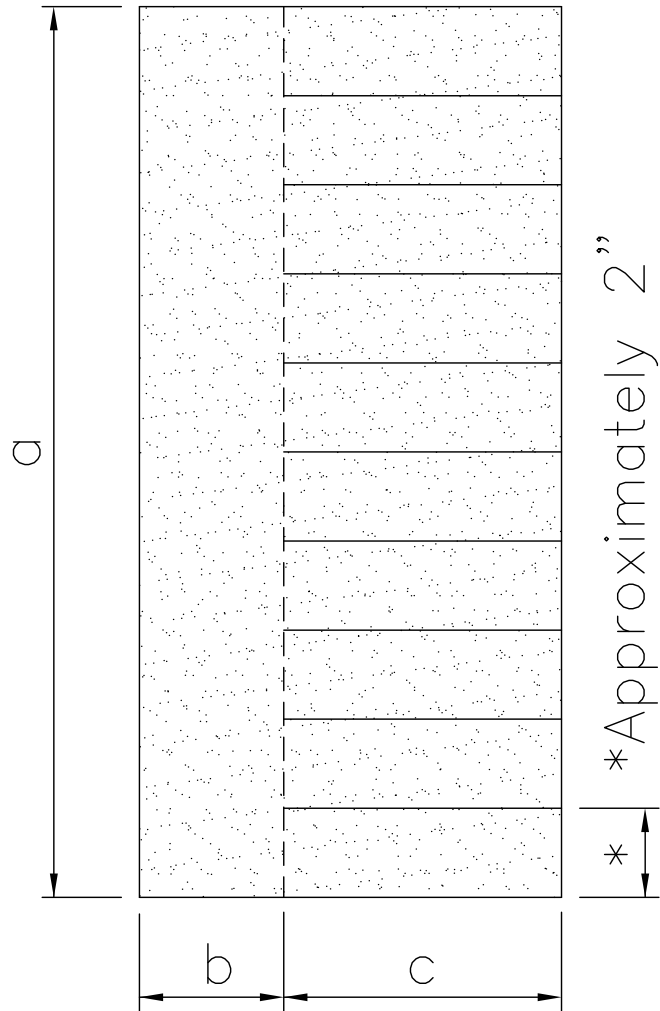
705FR-14A.1

INSTALLATION SEQUENCE
705FR AT PIPE PENETRATION

CARLISLE
COATINGS & WATERPROOFING

© 2012 CARLISLE CORPORATION

PIECE TO INSTALL
AROUND PIPE

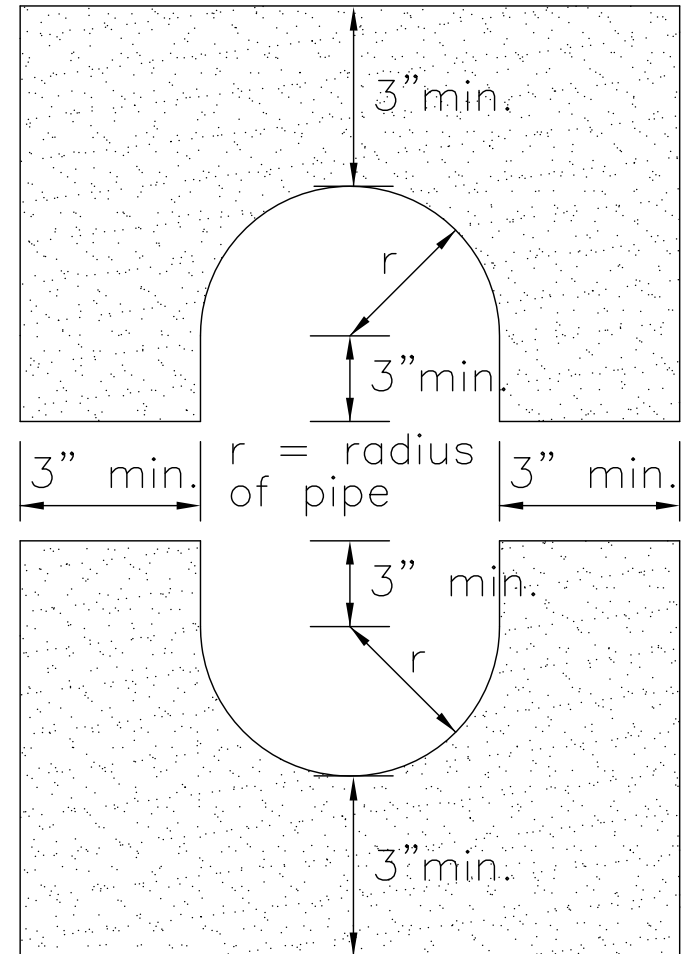


a = pipe
circumference
plus 3" to 4"

b ≥ 3"

c ≥ 3"

PIECE TO INSTALL
ABOVE PIPE

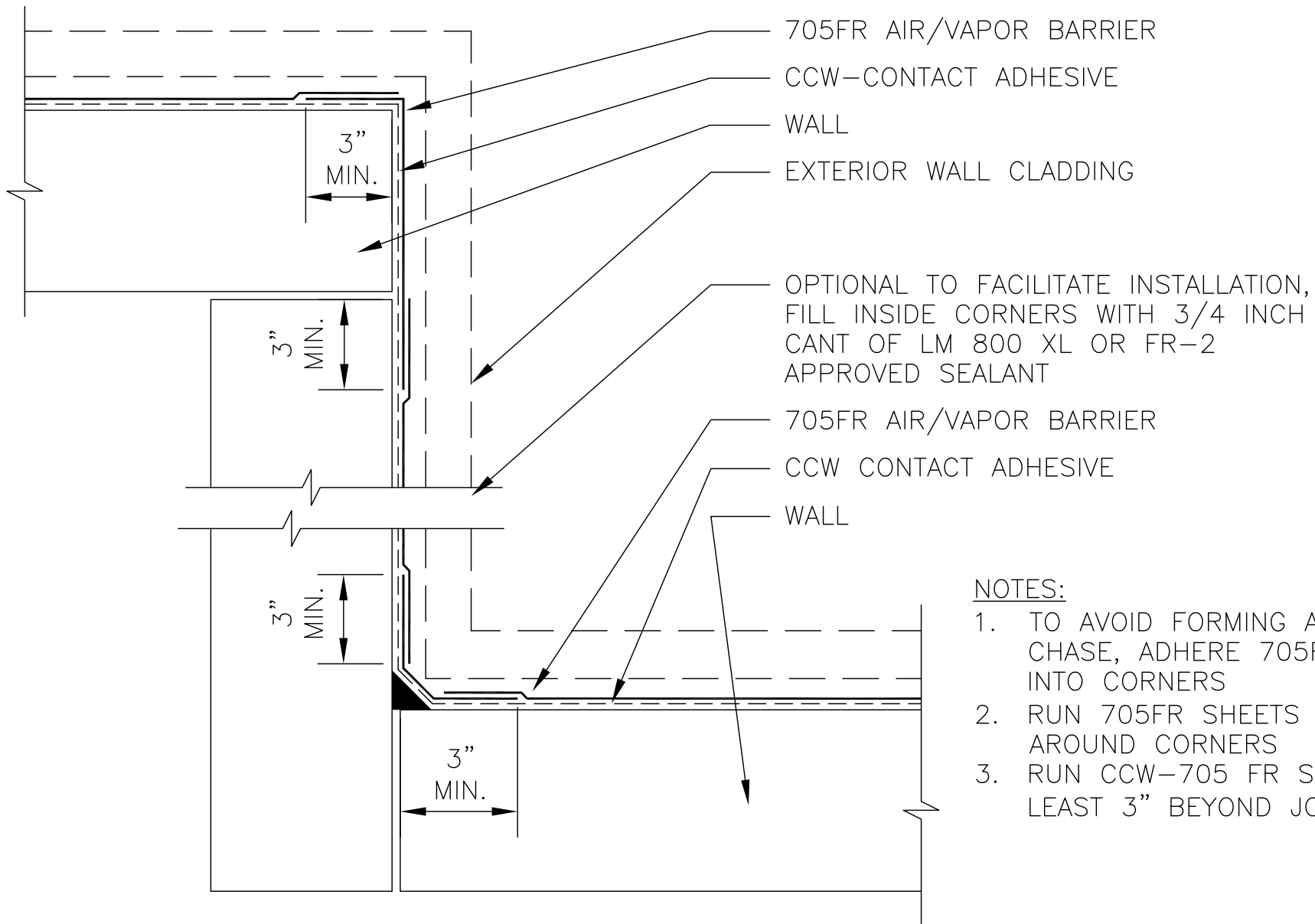


PIECE TO INSTALL
BELOW PIPE

DRAWING FOR GUIDANCE. NOT FOR CONSTRUCTION

705FR-14A.2

CUTTING 705FR STRIPS FOR
PIPE PENETRANION DETAIL



NOTES:

1. TO AVOID FORMING AN AIR/WATER CHASE, ADHERE 705FR TIGHTLY INTO CORNERS
2. RUN 705FR SHEETS AT LEAST 3" AROUND CORNERS
3. RUN CCW-705 FR SHEETS AT LEAST 3" BEYOND JOINTS

DRAWING FOR GUIDANCE. NOT FOR CONSTRUCTION

705FR-15A

705FR
INSIDE — OUTSIDE CORNERS

CARLISLE
COATINGS & WATERPROOFING

© 2012 CARLISLE CORPORATION

NOTES:

1. ALL SURFACES ACCEPTING
CCW-705 FR AND
MIRADRI-860/861 STRIPS
SHALL BE PREPARED WITH
CCW CONTACT ADHESIVE

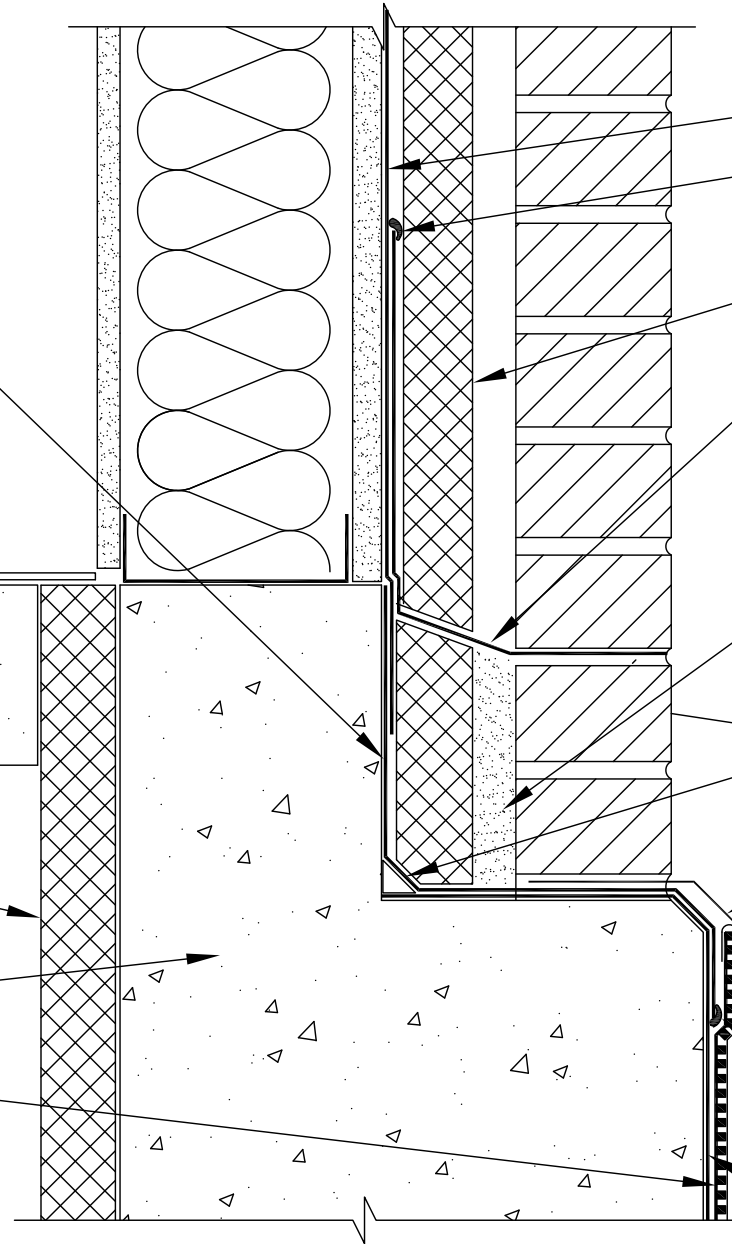
MIRADRI 860/861 STRIP. LAP
6" MINIMUM ONTO BELOW GRADE
WATERPROOFING SYSTEM AND
TERMINATE WITH MASTIC. PEEL BACK
DRAINAGE COMPOSITE FOR ACCESS
IF NECESSARY

SLAB

BELOW GRADE INSULATION.
R-VALUE TO CODE

FOUNDATION

MIRADRRAIN



705FR

FR-1 OR FR-2
APPROVED SEALANT

CAVITY INSULATION

705FR, INSTALL
FLUSH WITH BRICK
VENEER AND RUN UP
WALL 8" MIN.

CAVITY GROUT SOLID

GRADE

3/4" CANT STRIP
OF CCW-201 SEALANT

METAL COUNTER-
FLASHING TO PROTECT
WATERPROOFING
TERMINATION

CCW-704 OR LM 800
XL MASTIC

MIRADRI 860/861 OR
BAERRICOAT-S/R

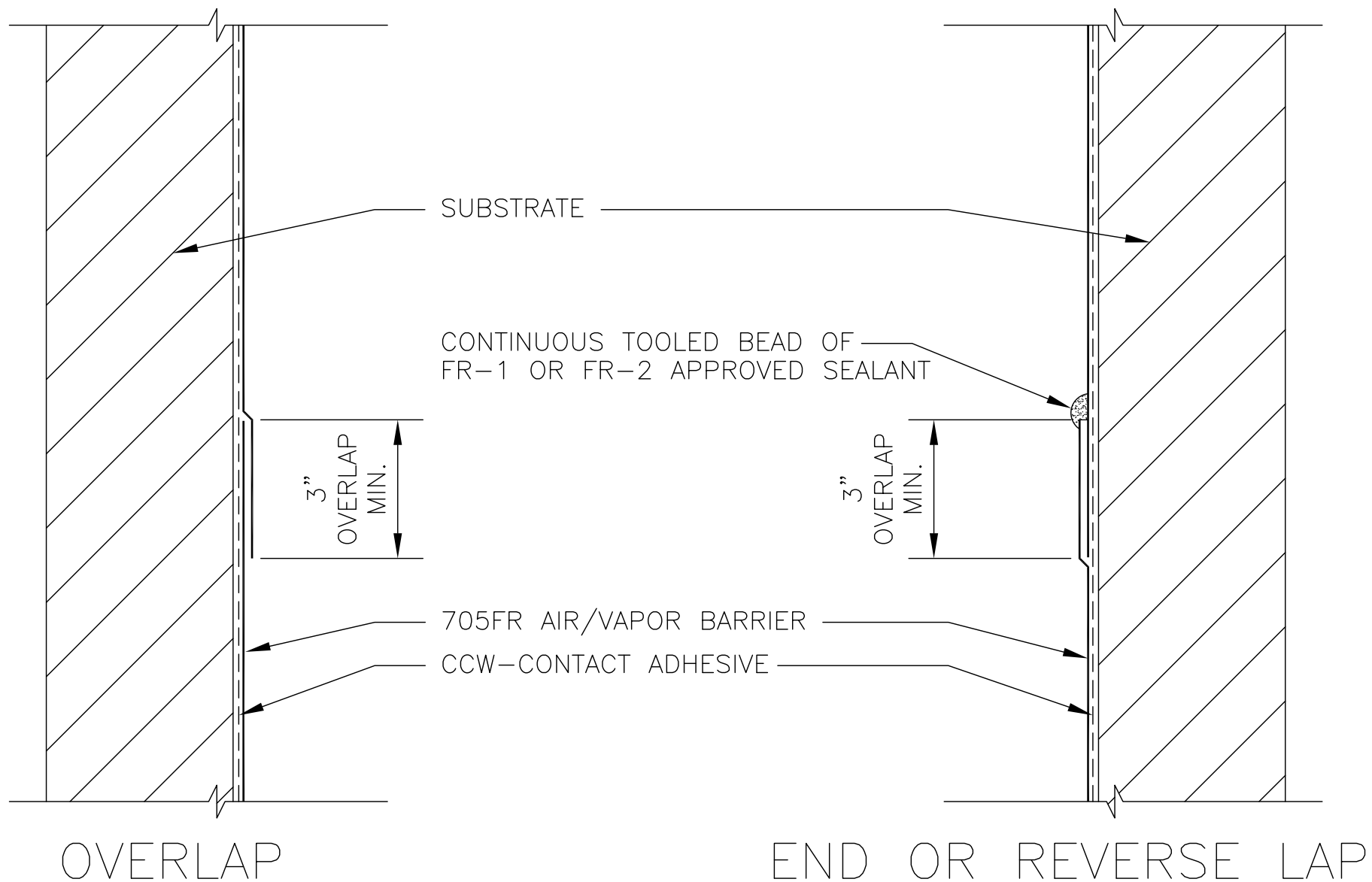
DRAWING FOR GUIDANCE. NOT FOR CONSTRUCTION

705FR-16A

705FR
FOUNDATION TIE-IN

CARLISLE
COATINGS & WATERPROOFING

© 2012 CARLISLE CORPORATION



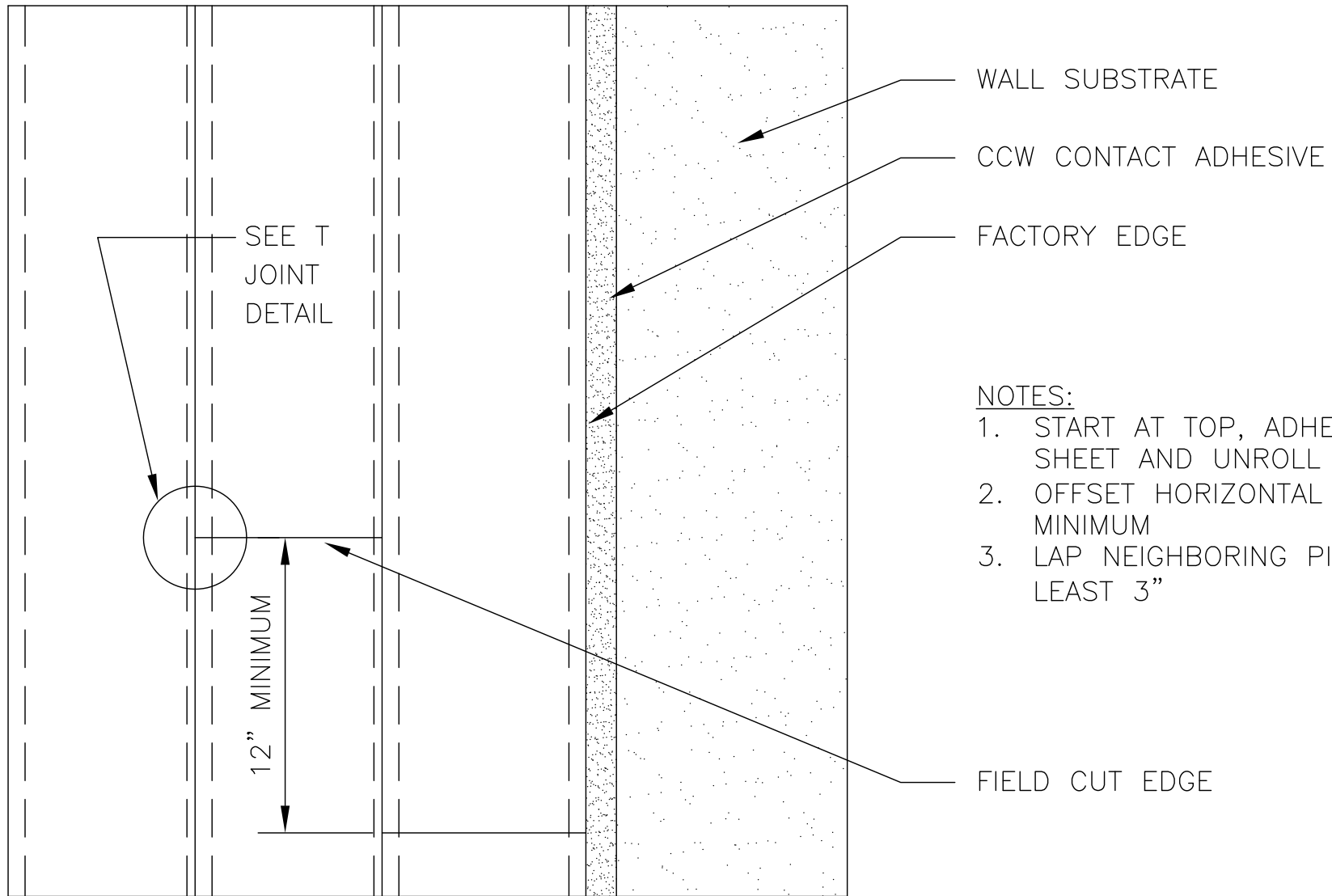
DRAWING FOR GUIDANCE. NOT FOR CONSTRUCTION

705FR-2A

705FR LAPS



© 2012 CARLISLE CORPORATION



NOTES:

1. START AT TOP, ADHERE TOP OF SHEET AND UNROLL DOWN WALL
2. OFFSET HORIZONTAL SEAMS 12" MINIMUM
3. LAP NEIGHBORING PIECES AT LEAST 3"

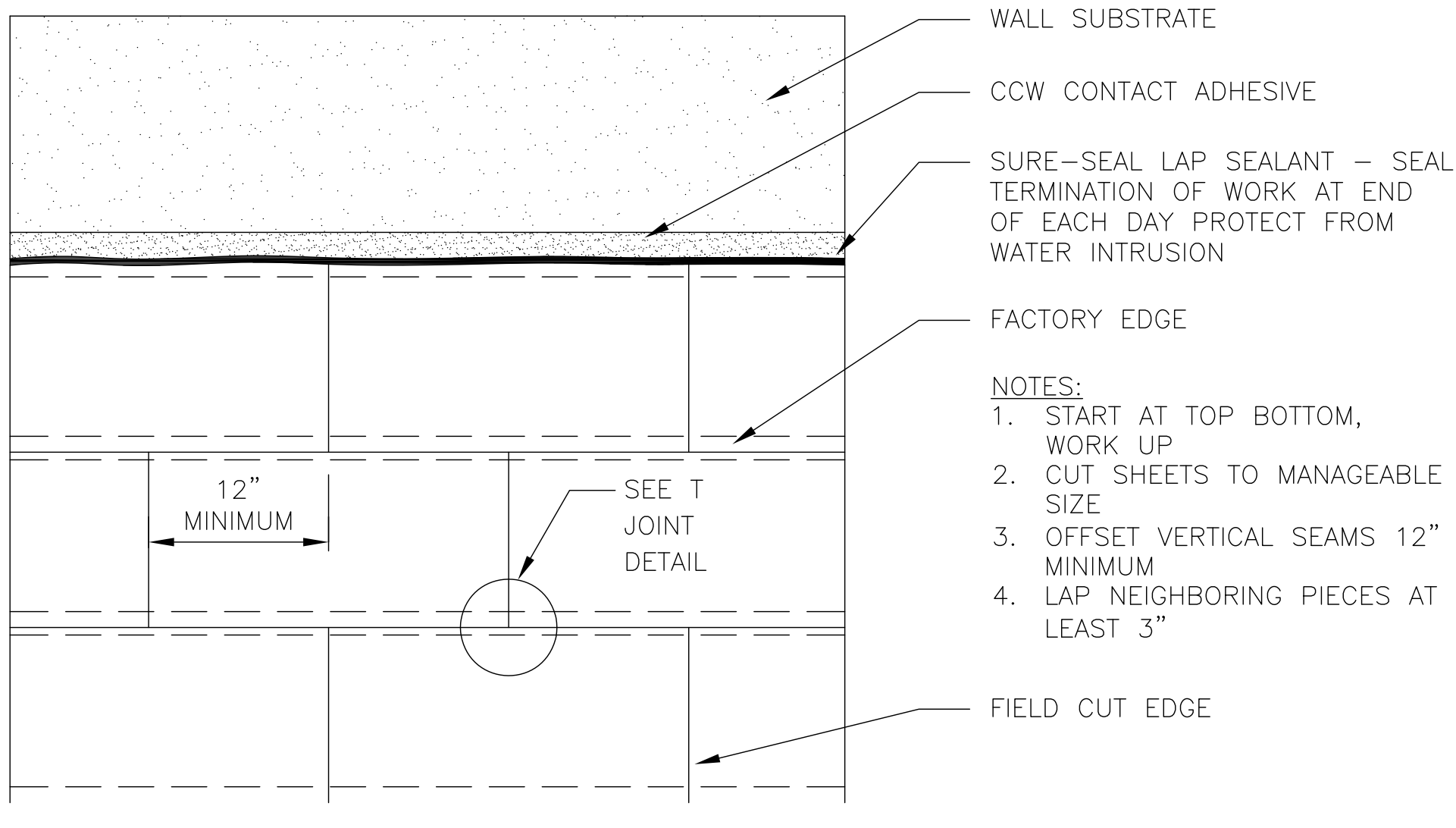
DRAWING FOR GUIDANCE. NOT FOR CONSTRUCTION

705FR-2B

705FR
VERTICAL INSTALLATION



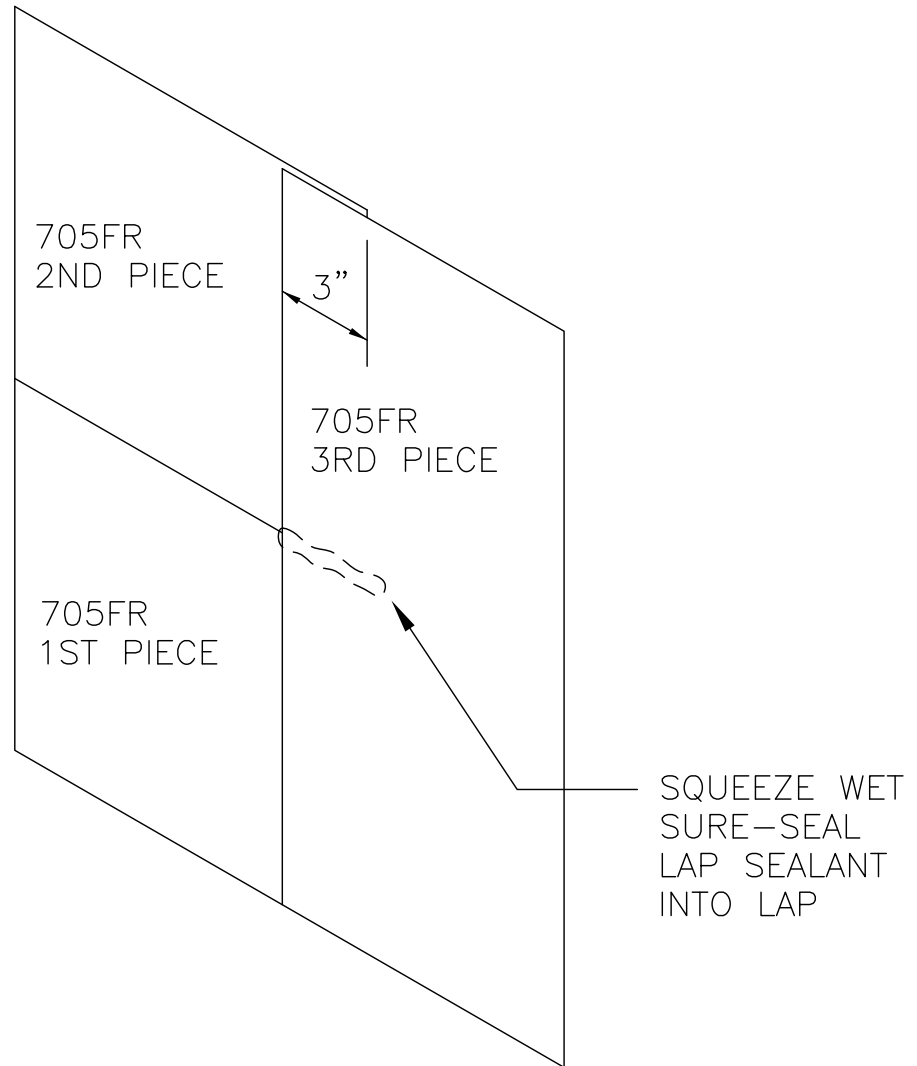
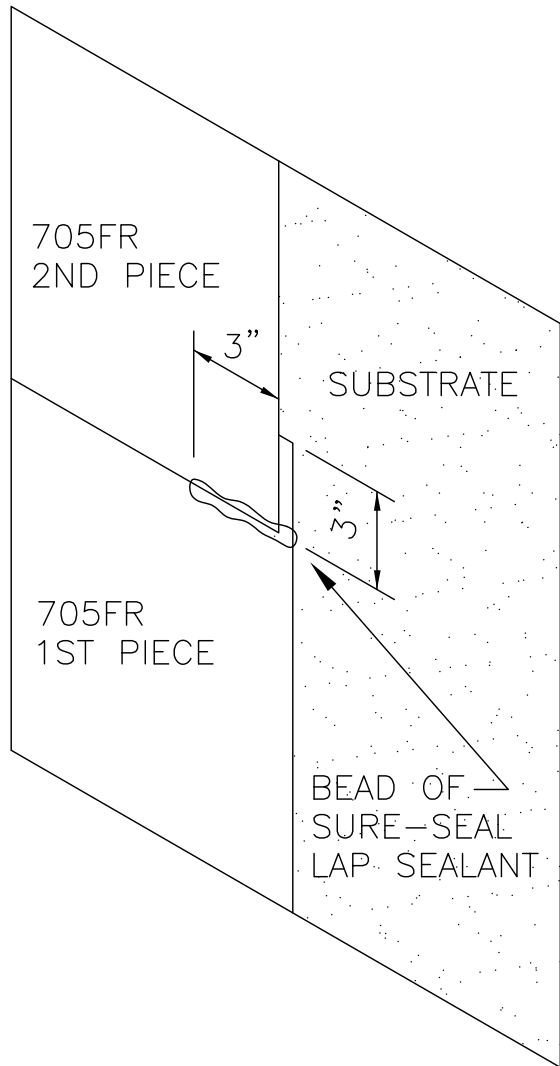
© 2012 CARLISLE CORPORATION



DRAWING FOR GUIDANCE. NOT FOR CONSTRUCTION

705FR-2C

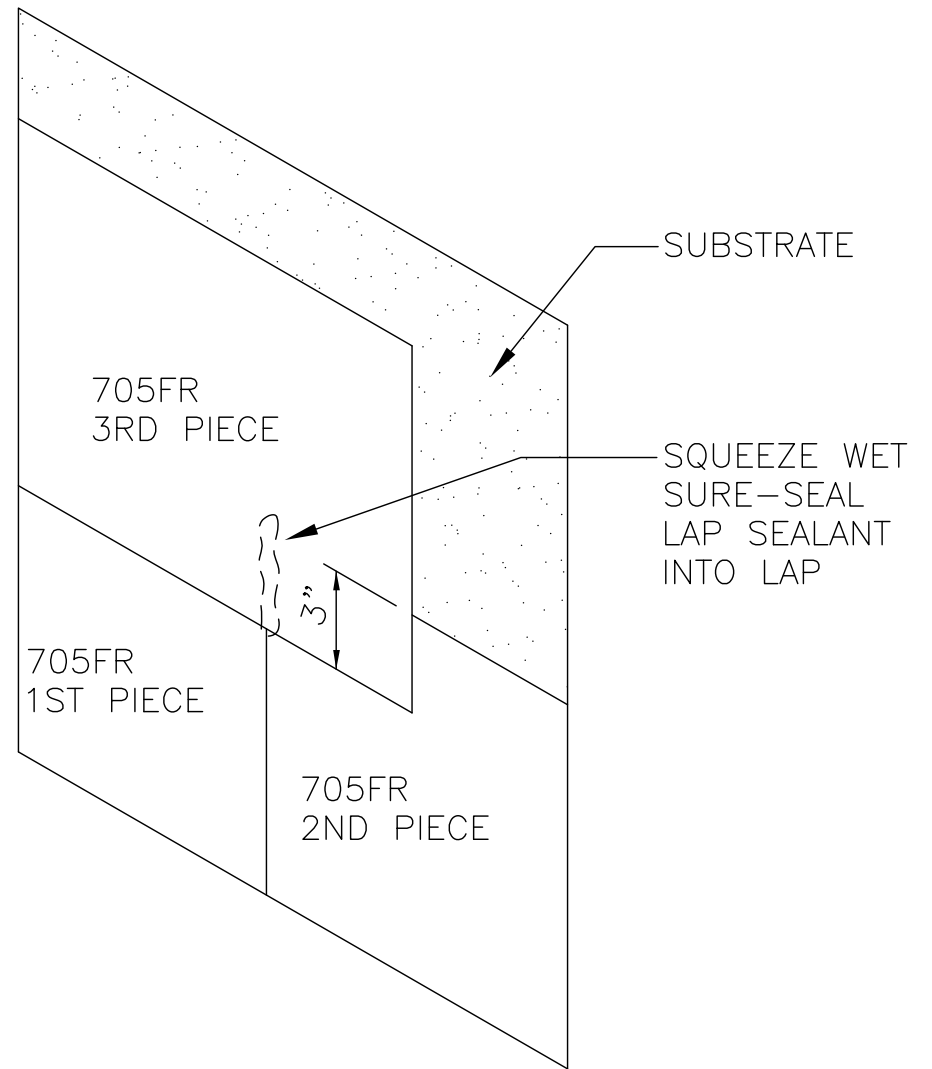
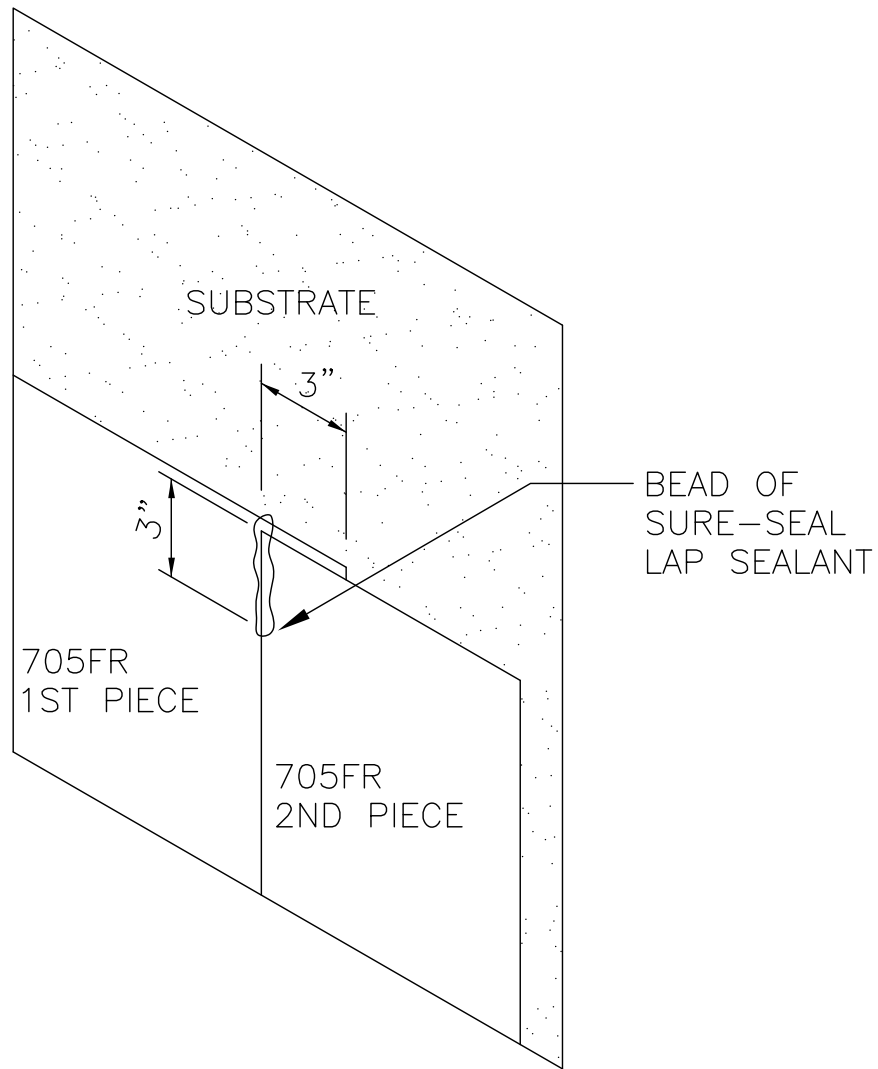
705FR
HORIZONTAL INSTALLATION



DRAWING FOR GUIDANCE. NOT FOR CONSTRUCTION

705FR-2D

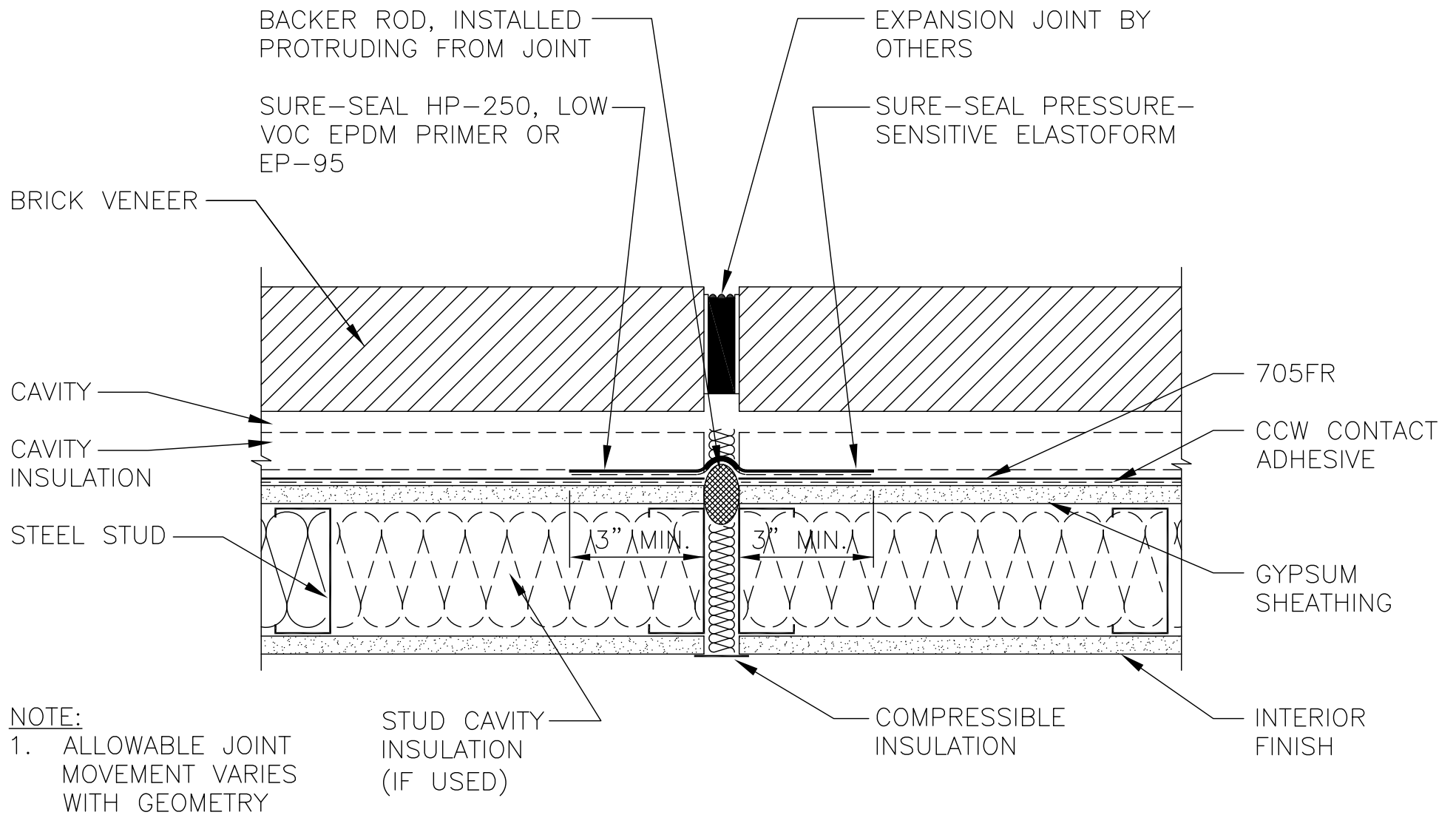
705FR
VERTICAL T JOINTS



DRAWING FOR GUIDANCE. NOT FOR CONSTRUCTION

705FR-2E

705FR
HORIZONTAL T JOINTS



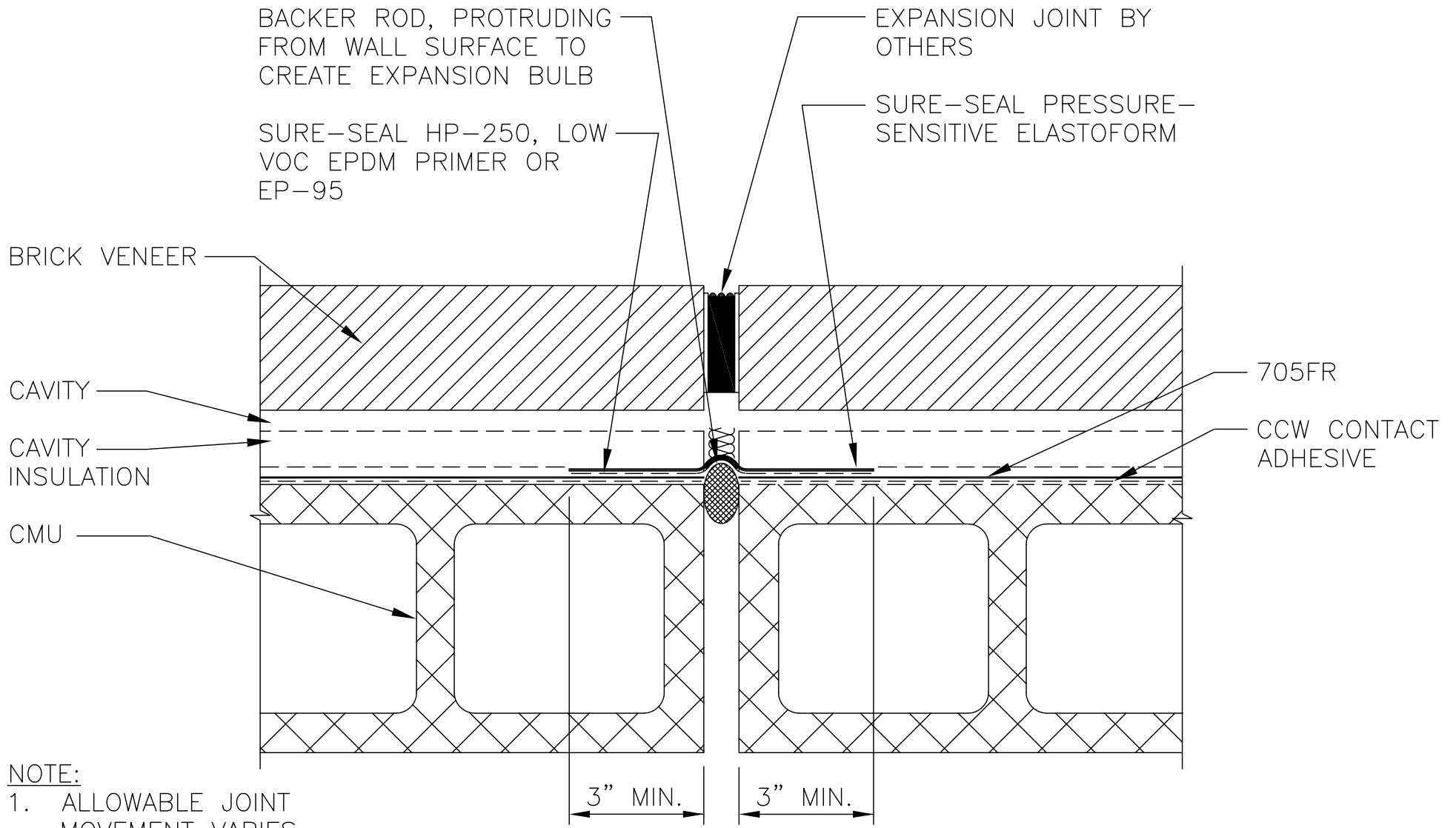
DRAWING FOR GUIDANCE. NOT FOR CONSTRUCTION

705FR-3A

GYPSUM SHEATHING
VERTICAL EXPANSION JOINT

CARLISLE
COATINGS & WATERPROOFING

© 2012 CARLISLE CORPORATION



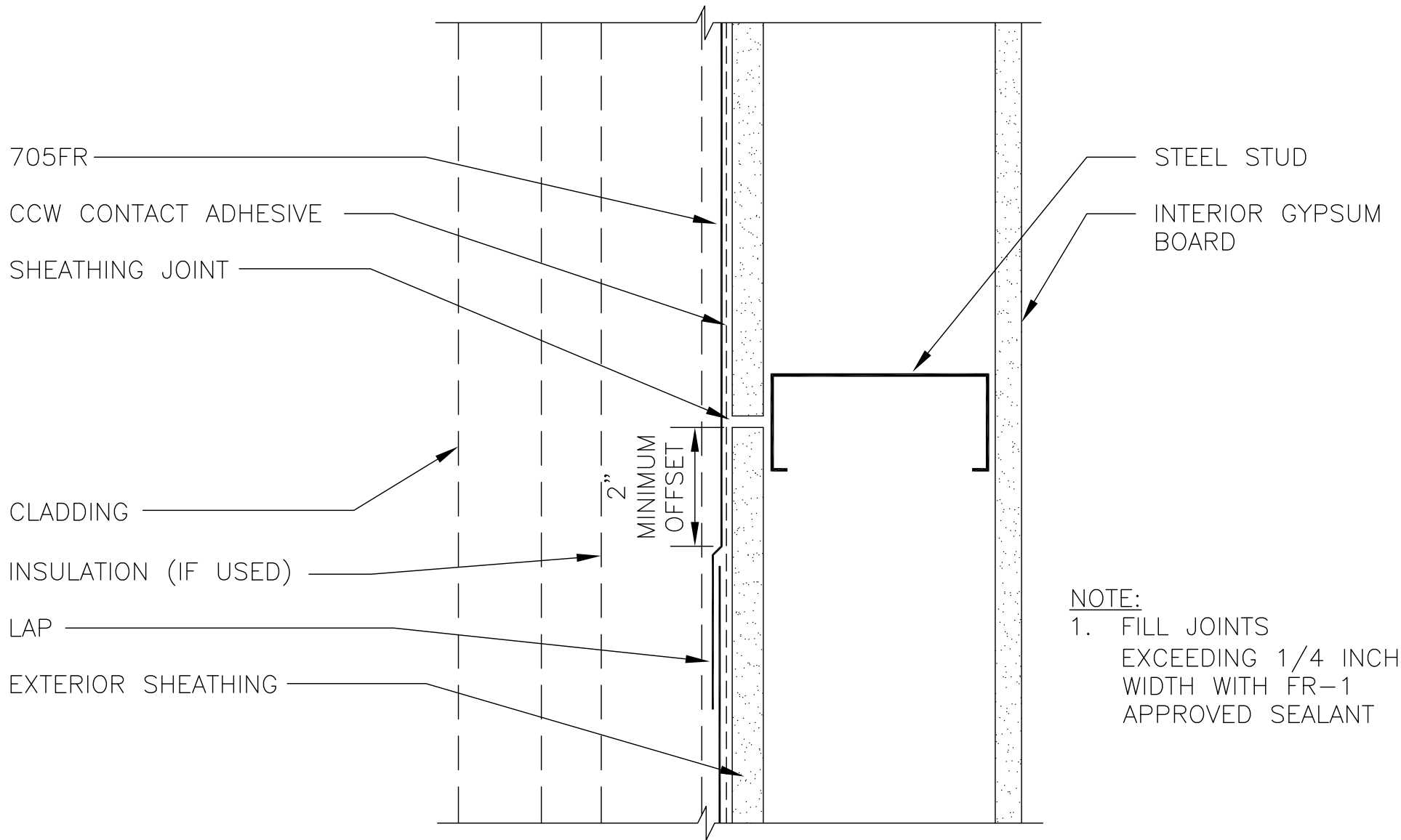
NOTE:
 1. ALLOWABLE JOINT MOVEMENT VARIES WITH GEOMETRY

DRAWING FOR GUIDANCE. NOT FOR CONSTRUCTION

705FR-3B

705FR
 CMU EXPANSION JOINT





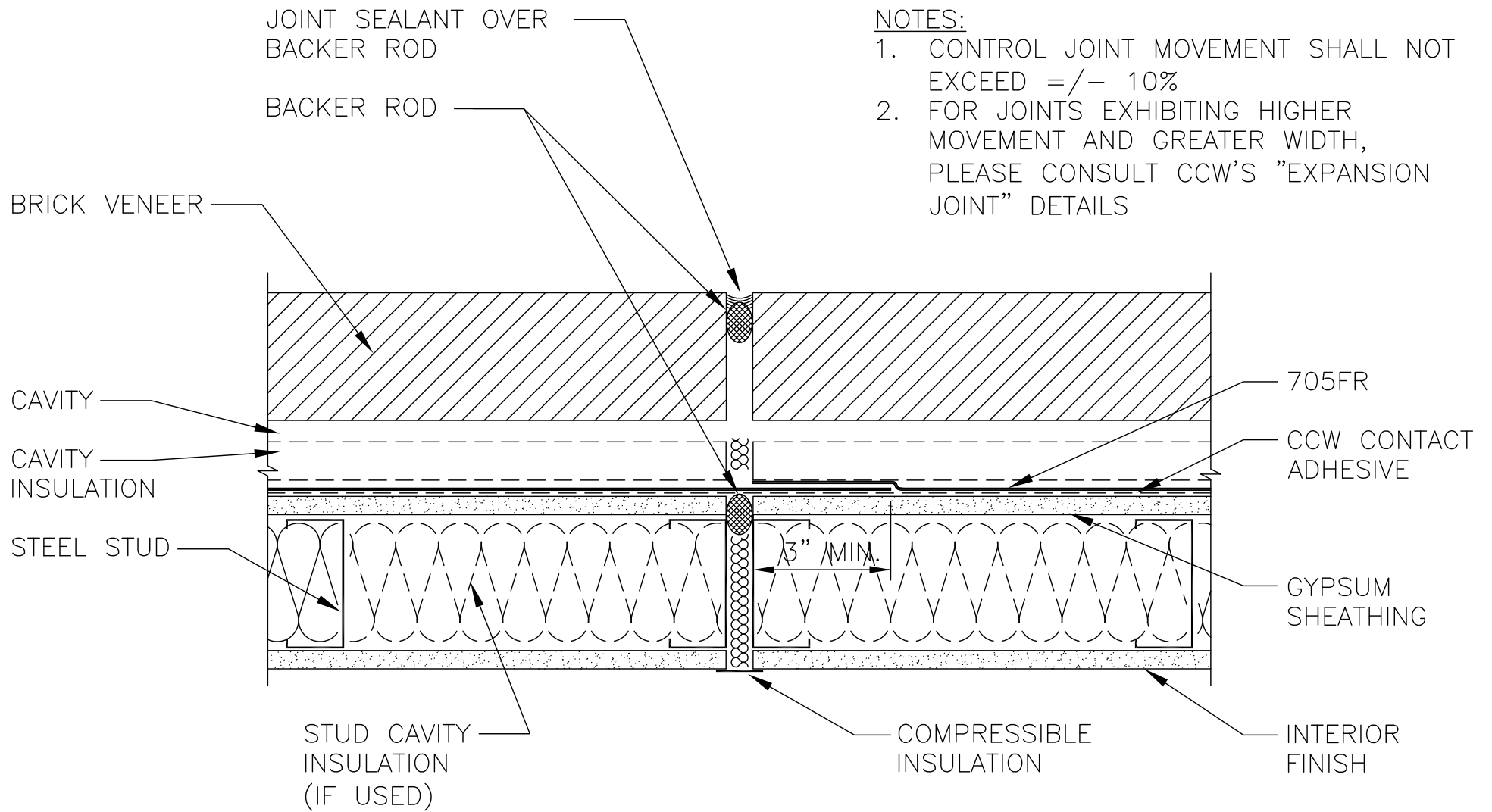
NOTE:
 1. FILL JOINTS EXCEEDING 1/4 INCH WIDTH WITH FR-1 APPROVED SEALANT

DRAWING FOR GUIDANCE. NOT FOR CONSTRUCTION

705FR-4A

705FR
 SHEATHING JOINTS





NOTES:

1. CONTROL JOINT MOVEMENT SHALL NOT EXCEED $\pm 10\%$
2. FOR JOINTS EXHIBITING HIGHER MOVEMENT AND GREATER WIDTH, PLEASE CONSULT CCW'S "EXPANSION JOINT" DETAILS

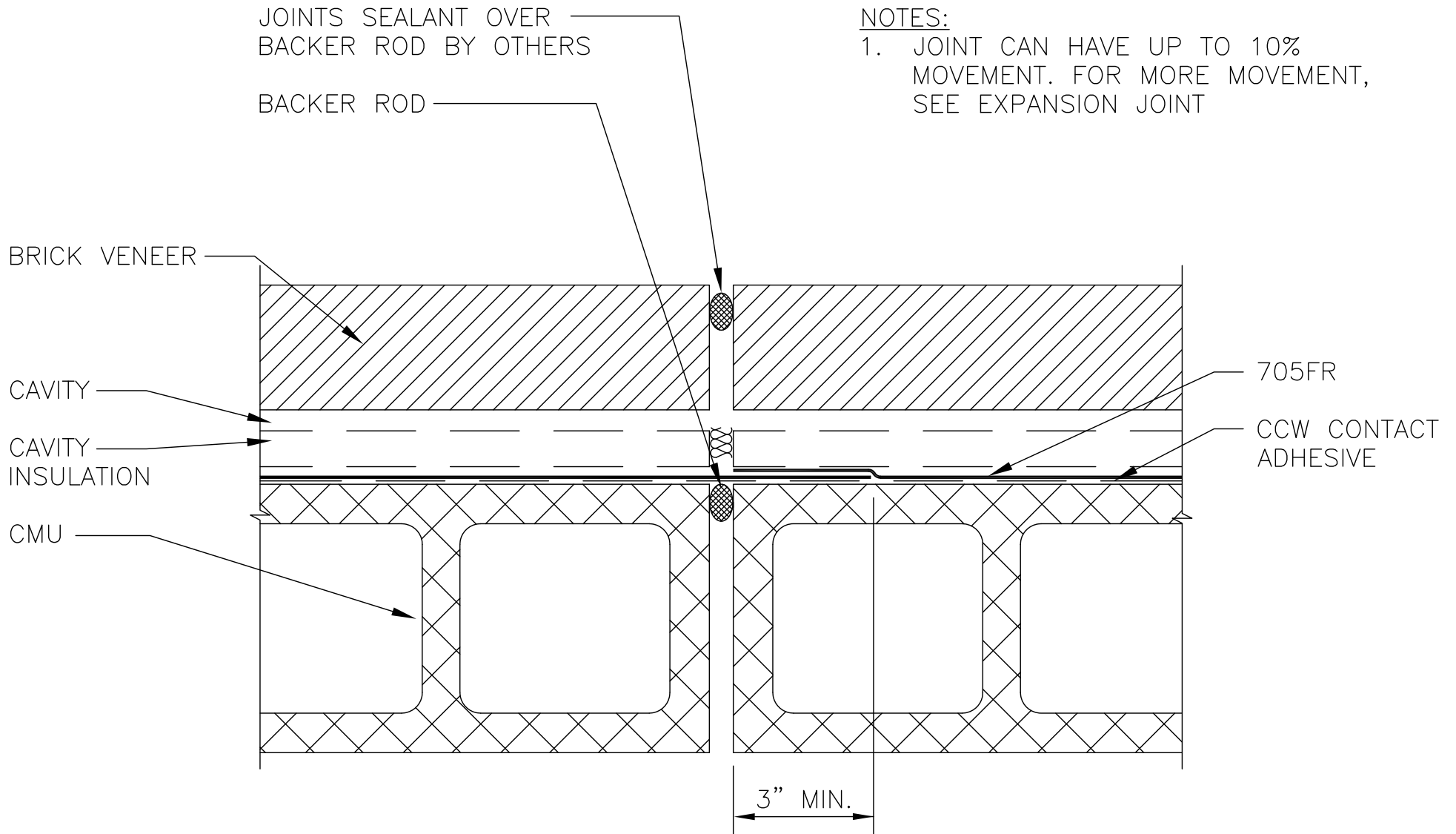
DRAWING FOR GUIDANCE. NOT FOR CONSTRUCTION

705FR-4B

GYPSUM SHEATHING
VERTICAL CONTROL JOINT



© 2012 CARLISLE CORPORATION

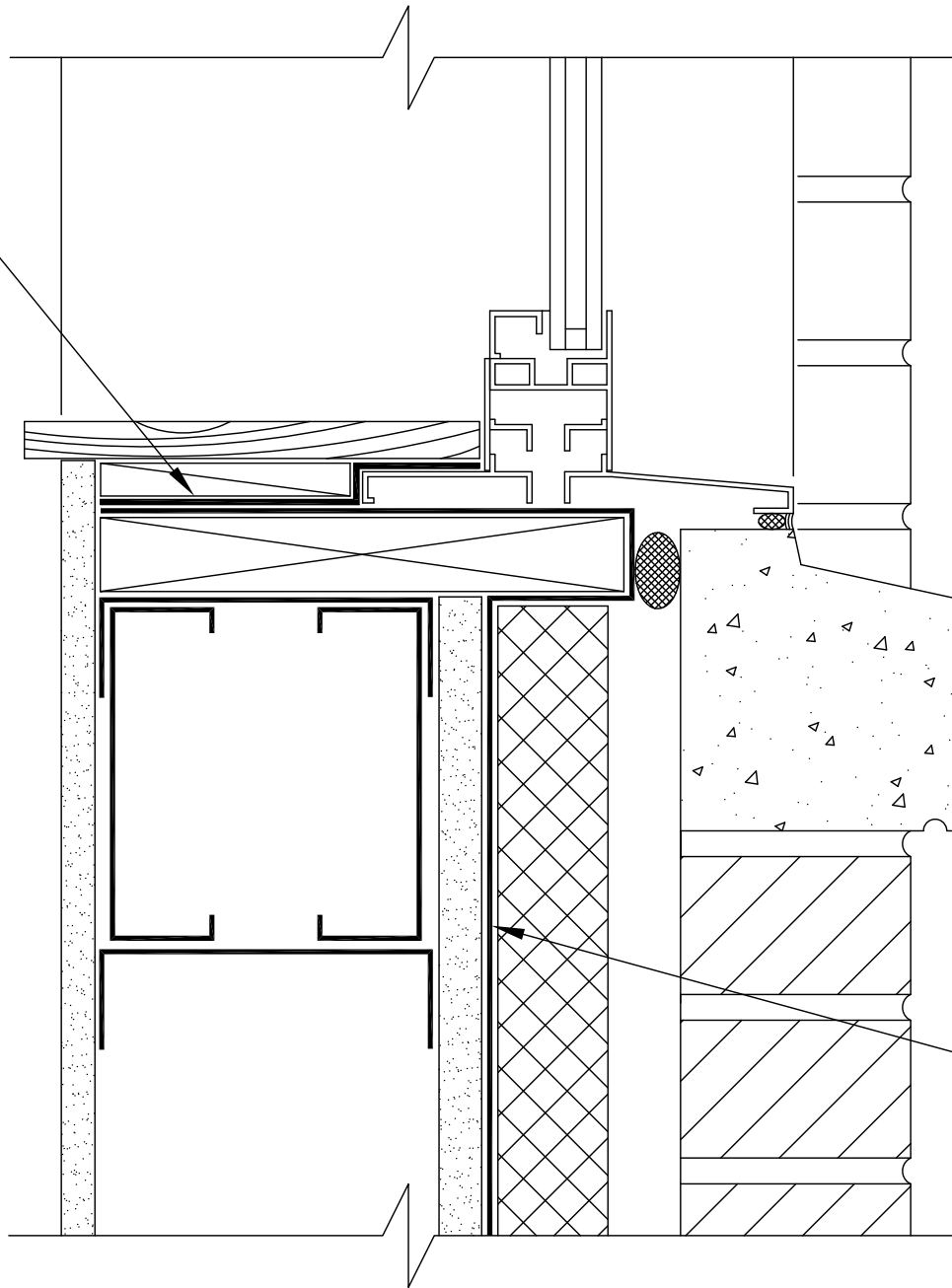


DRAWING FOR GUIDANCE. NOT FOR CONSTRUCTION

705FR-4C

705FR
CMU CONTROL JOINT

6 INCH P/S
ELASTOFORM



NOTES:

1. PREPARE ALL SURFACES ACCEPTING 705FR WITH CCW CONTACT ADHESIVE
2. PREPARE ALL SURFACES ACCEPTING ELASTOFORM WITH HP-250 PRIMER, LOW VOC PRIMER OF EP-95

705FR

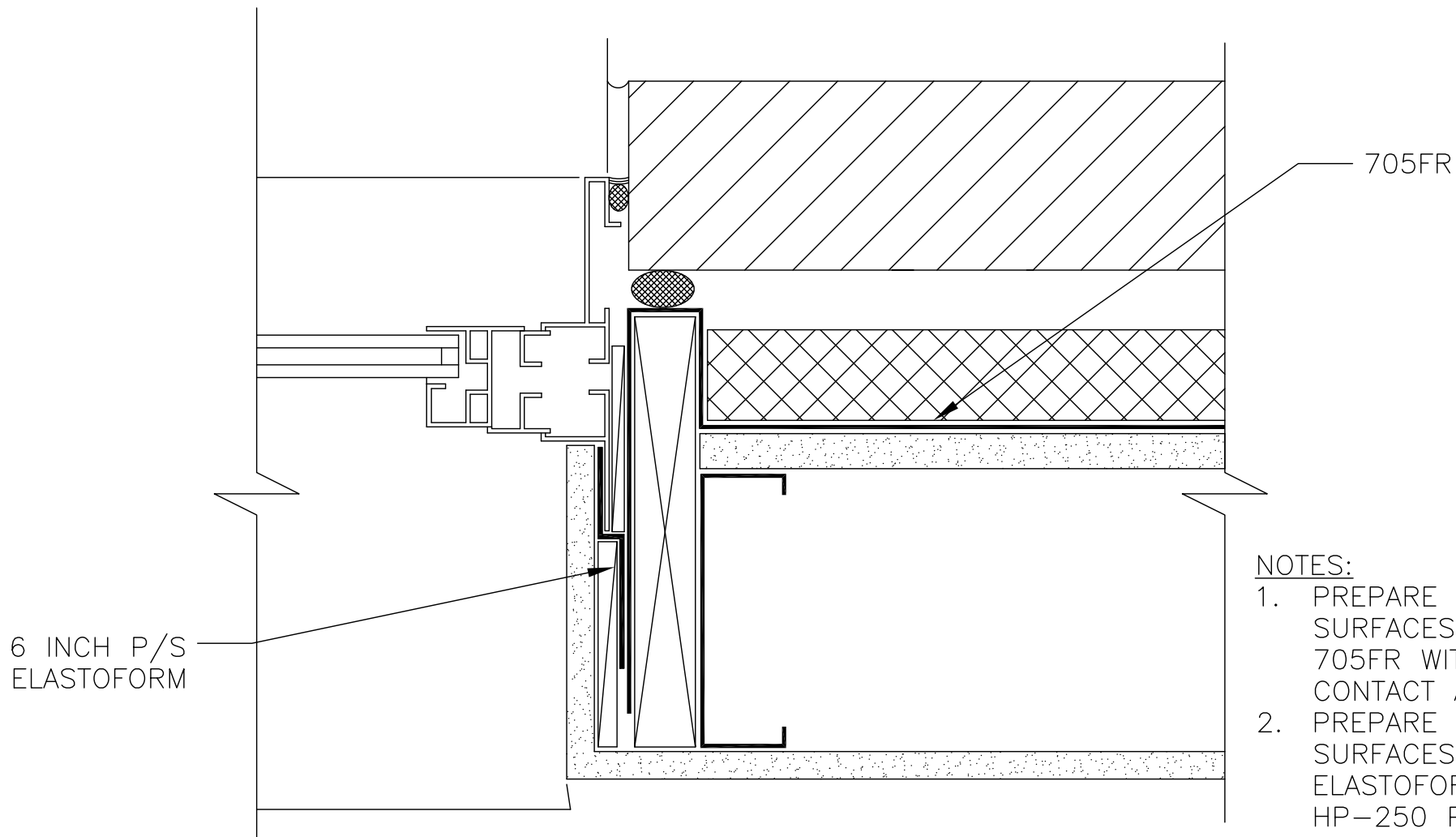
DRAWING FOR GUIDANCE. NOT FOR CONSTRUCTION

705FR-5A.1

705FR
PUNCHED WINDOW - SILL
INTERIOR AIR SEAL WITH ELASTOFORM

CARLISLE
COATINGS & WATERPROOFING

© 2012 CARLISLE CORPORATION



NOTES:

1. PREPARE ALL SURFACES ACCEPTING 705FR WITH CCW CONTACT ADHESIVE
2. PREPARE ALL SURFACES ACCEPTING ELASTOFORM WITH HP-250 PRIMER, LOW VOC PRIMER OF EP-95

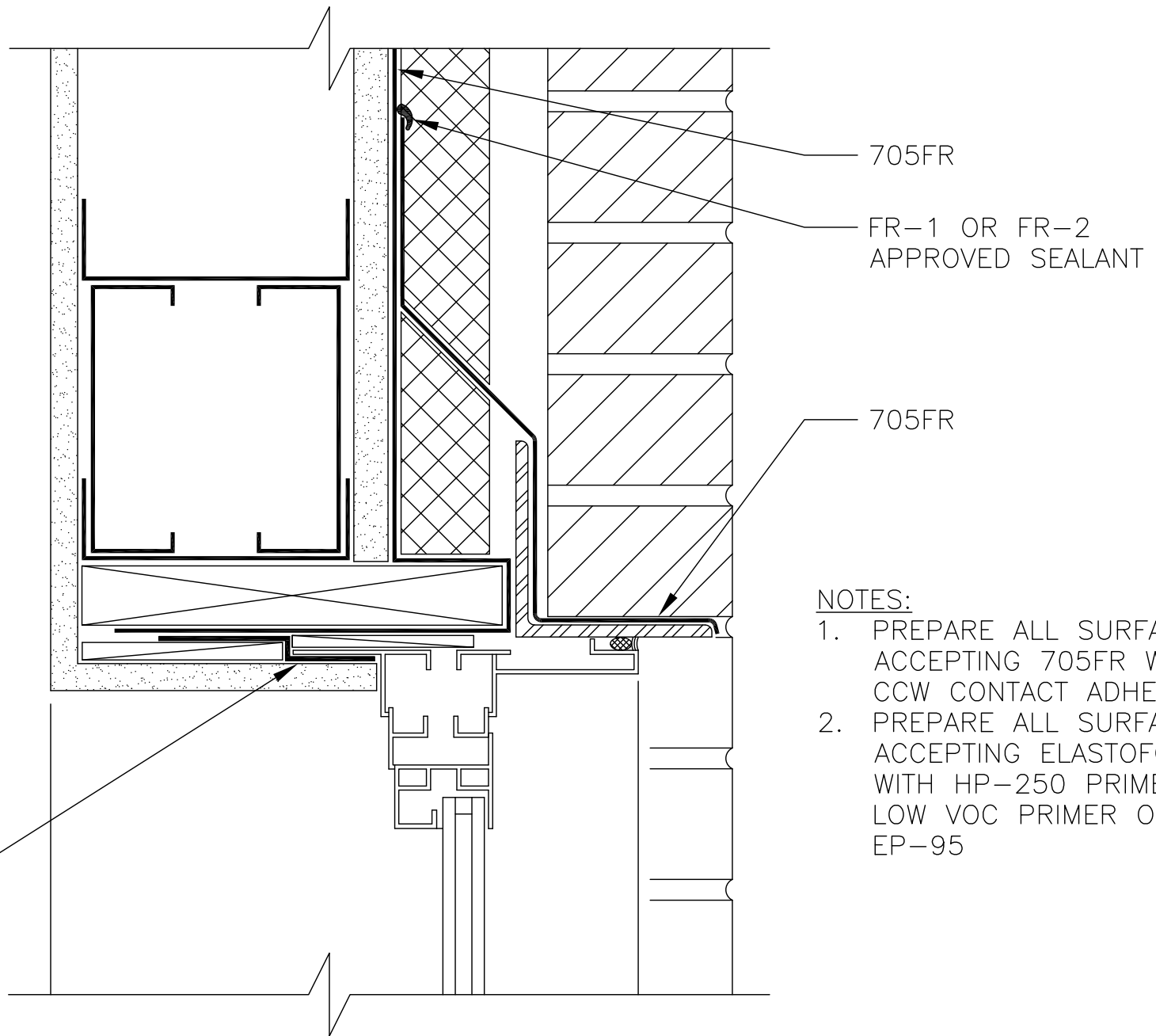
DRAWING FOR GUIDANCE. NOT FOR CONSTRUCTION

705FR-5A.2

705FR
PUNCHED WINDOW - JAMB
INTERIOR AIR SEAL WITH ELASTOFORM



© 2012 CARLISLE CORPORATION



DRAWING FOR GUIDANCE. NOT FOR CONSTRUCTION

705FR-5A.3

705FR
 PUNCHED WINDOW - HEAD
 INTERIOR AIR SEAL WITH ELASTOFORM

FR-1 OR FR-2
APPROVED SEALANT

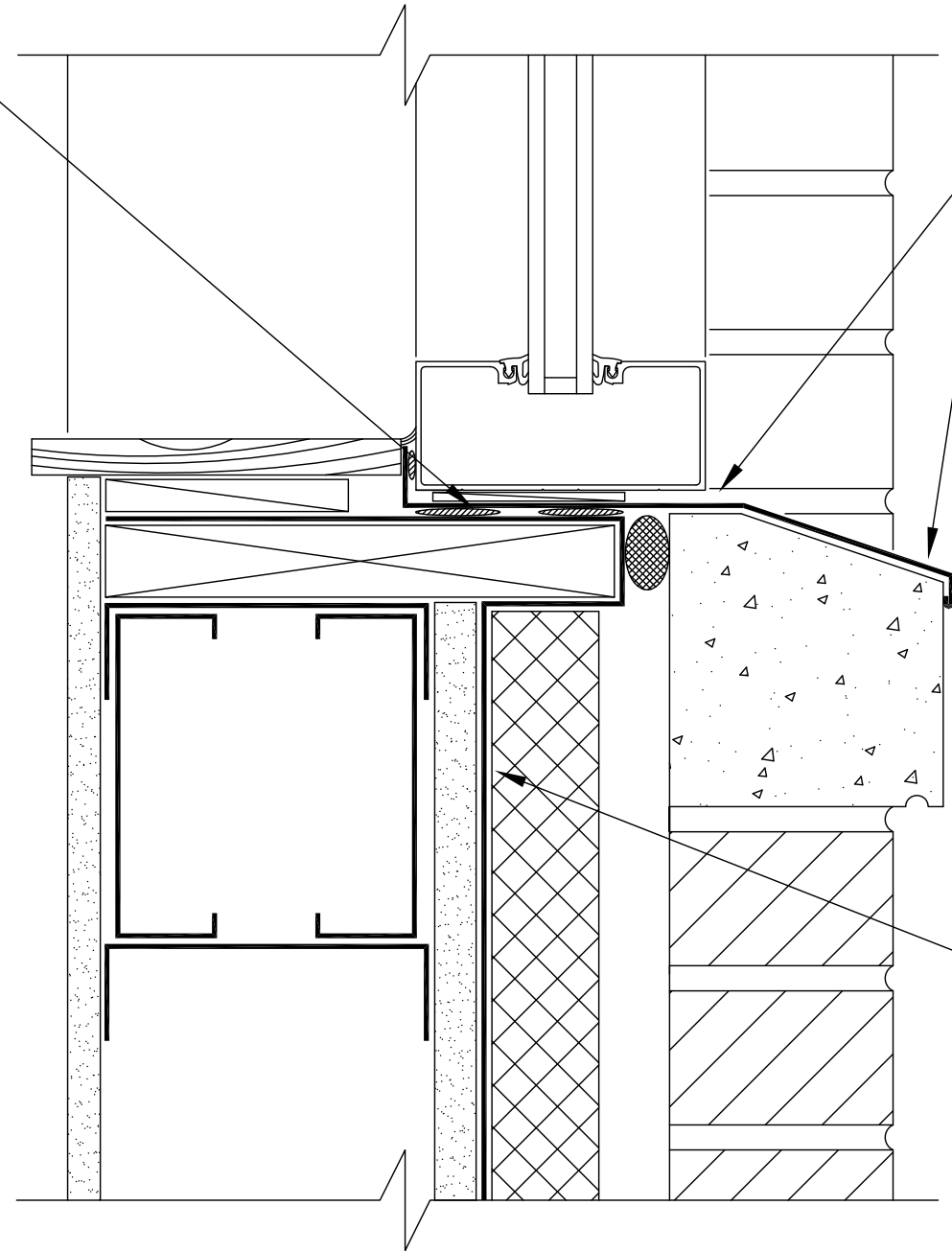
DO NOT CAULK HERE,
TO ALLOW DRAINAGE

SILL PAN FLASHING

NOTES:

1. PREPARE ALL SURFACES ACCEPTING 705FR WITH CCW CONTACT ADHESIVE

705FR

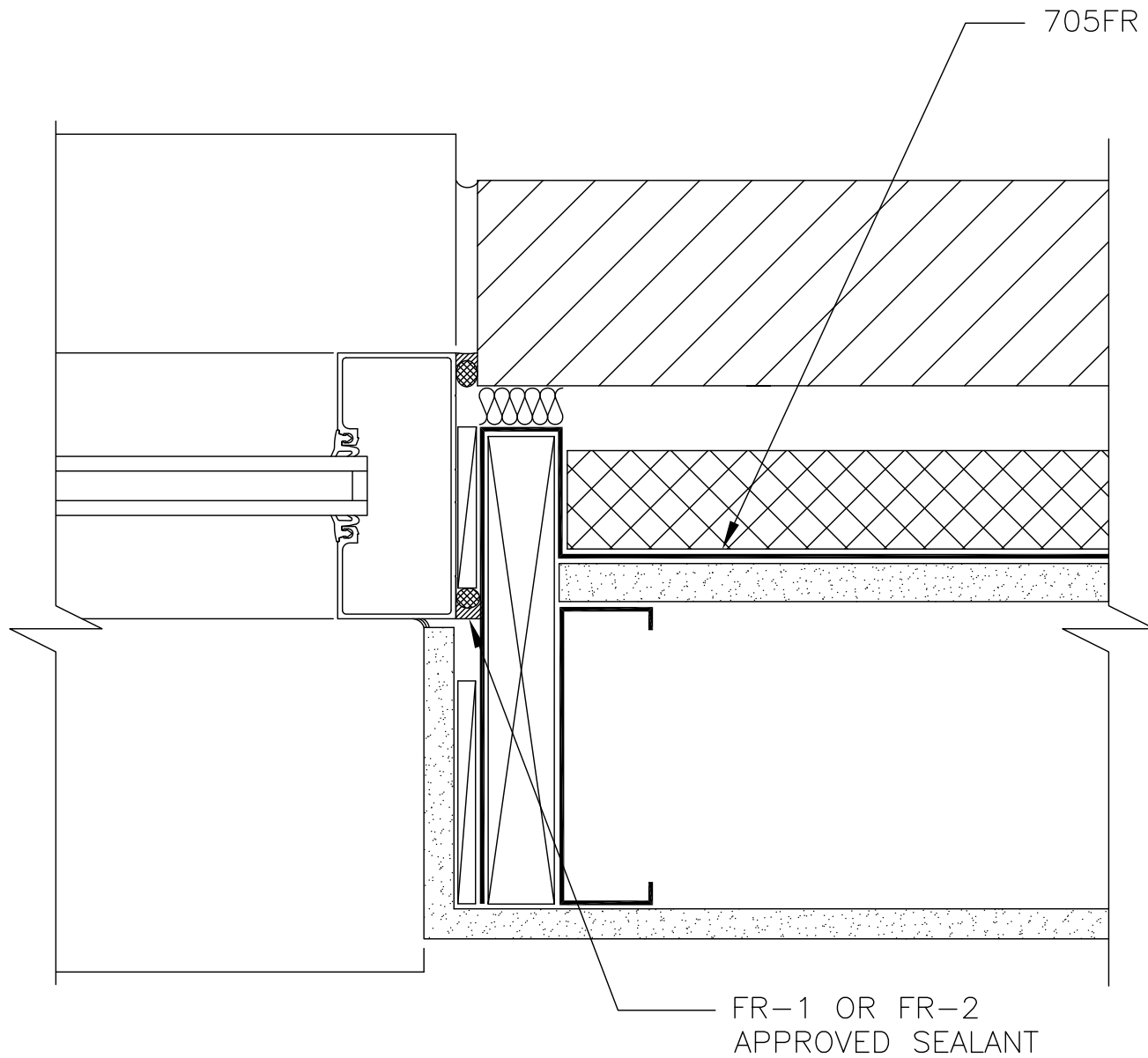


DRAWING FOR GUIDANCE. NOT FOR CONSTRUCTION

705FR-5B.1

705FR
PUNCHED WINDOW - SILL





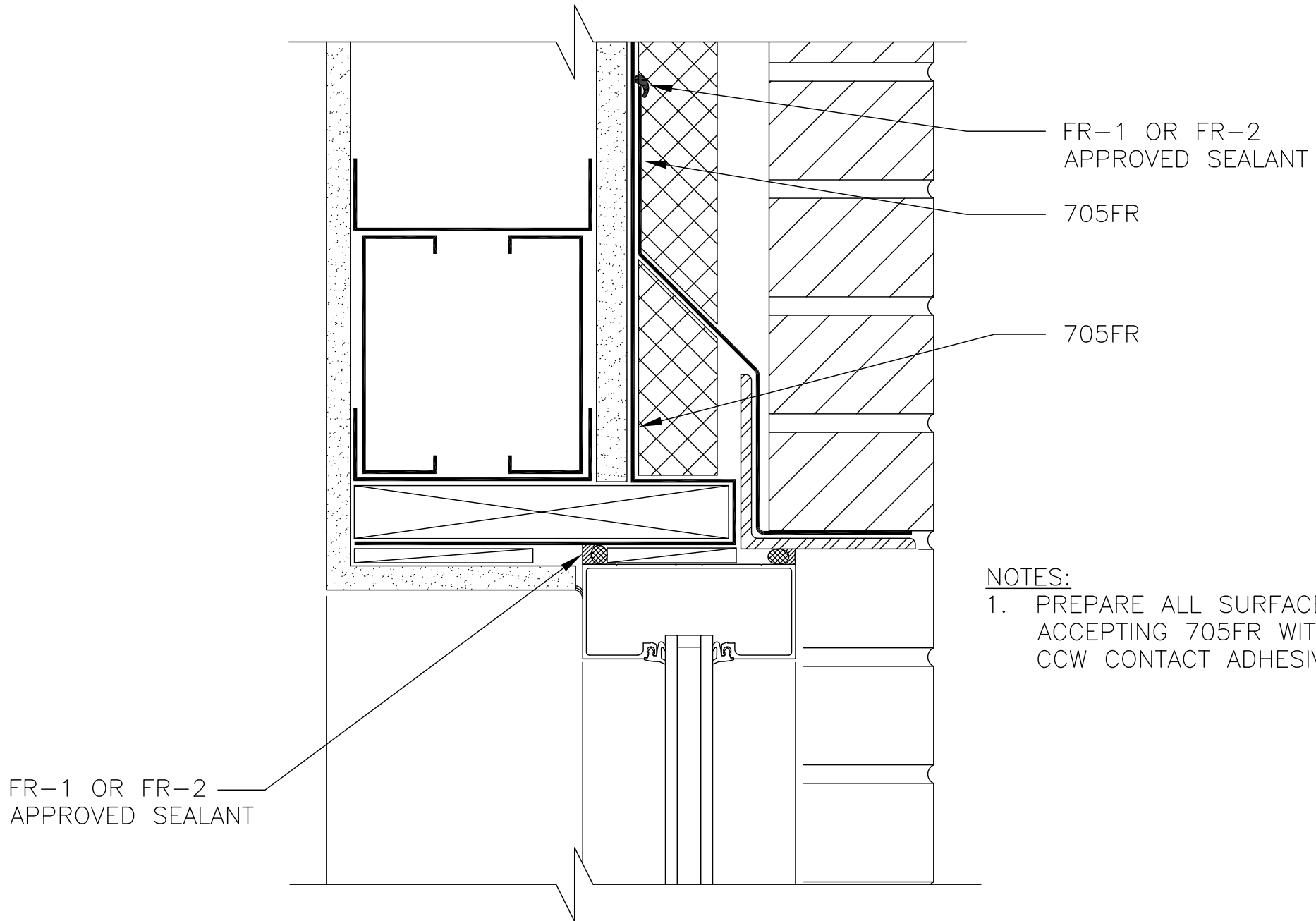
NOTES:

1. PREPARE ALL SURFACES ACCEPTING 705FR WITH CCW CONTACT ADHESIVE

DRAWING FOR GUIDANCE. NOT FOR CONSTRUCTION

705FR-5B.2

705FR
PUNCHED WINDOW — JAMB



DRAWING FOR GUIDANCE. NOT FOR CONSTRUCTION

705FR-5B.3

705FR
PUNCHED WINDOW — HEAD

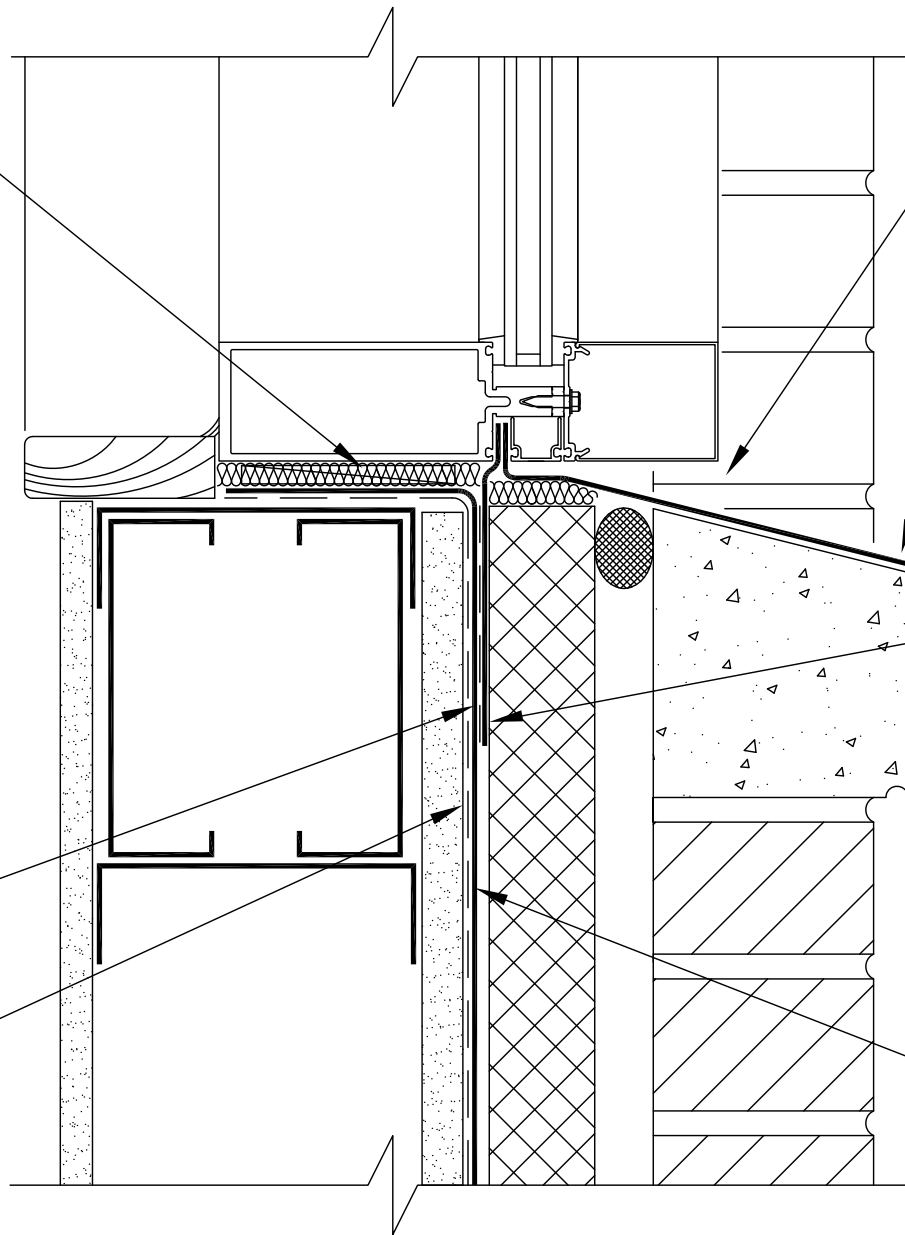
LOOSE FILL OR
FOAM INSULATION

NOTES:

1. ELASTOFORM FLASHING SHALL HAVE MINIMUM 3" FIRM BEARING ONTO WALL SURFACE
2. FILL GAP BETWEEN WINDOW AND WALL EXCEEDING 1" WITH BACKER ROD OR SHAVED FLUSH

EP-95, HP-250
PRIMER OR LOW
VOC EPDM PRIMER

CCW CONTACT
ADHESIVE



DO NOT CAULK HERE,
TO ALLOW DRAINAGE

METAL PAN FLASHING

SURE-SEAL PRESSURE
SENSITIVE ELASTOFORM
FLASHING

705FR

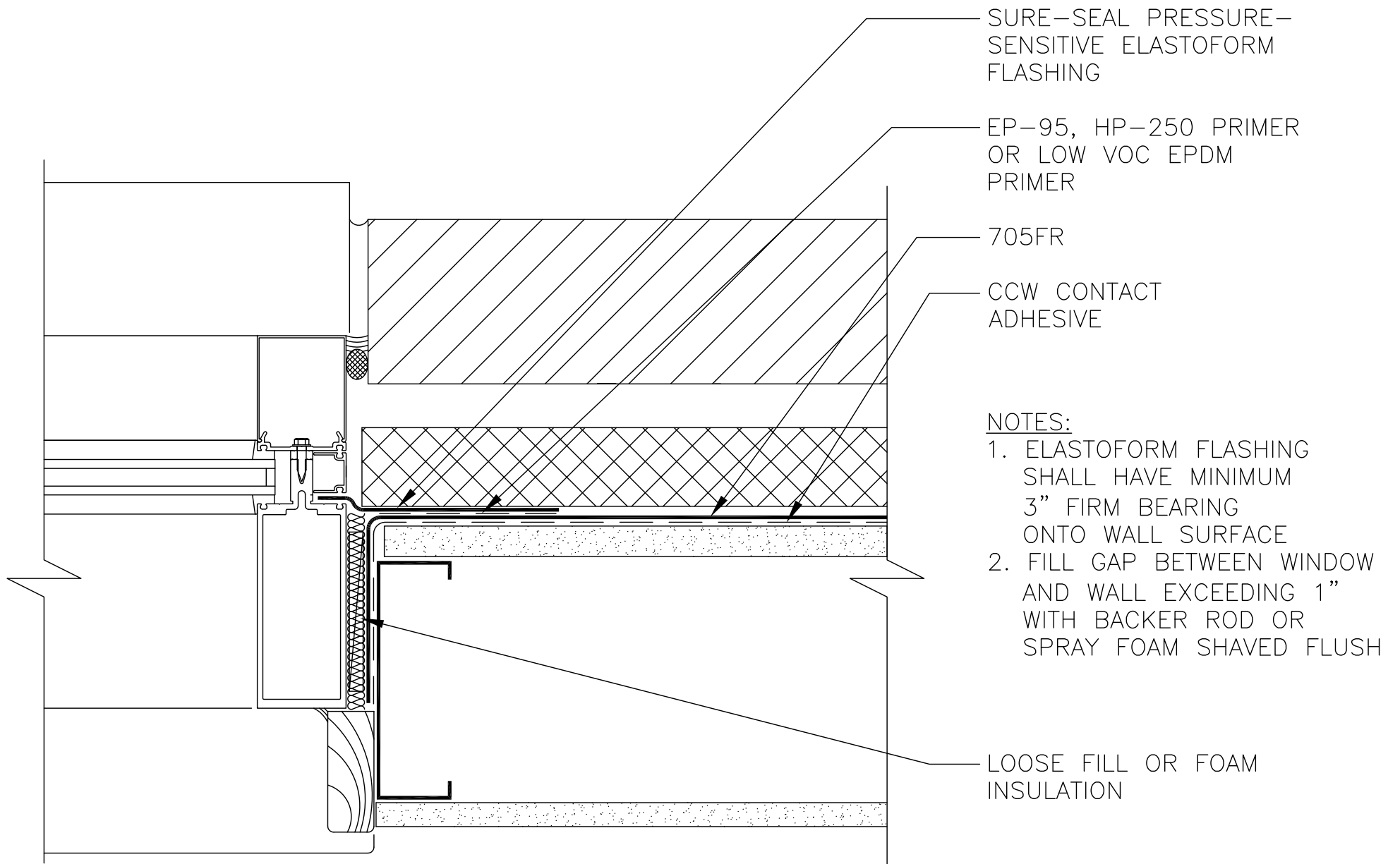
DRAWING FOR GUIDANCE. NOT FOR CONSTRUCTION

705FR-5C.1

705FR
CURTAIN WALL - SILL

CARLISLE
COATINGS & WATERPROOFING

© 2012 CARLISLE CORPORATION



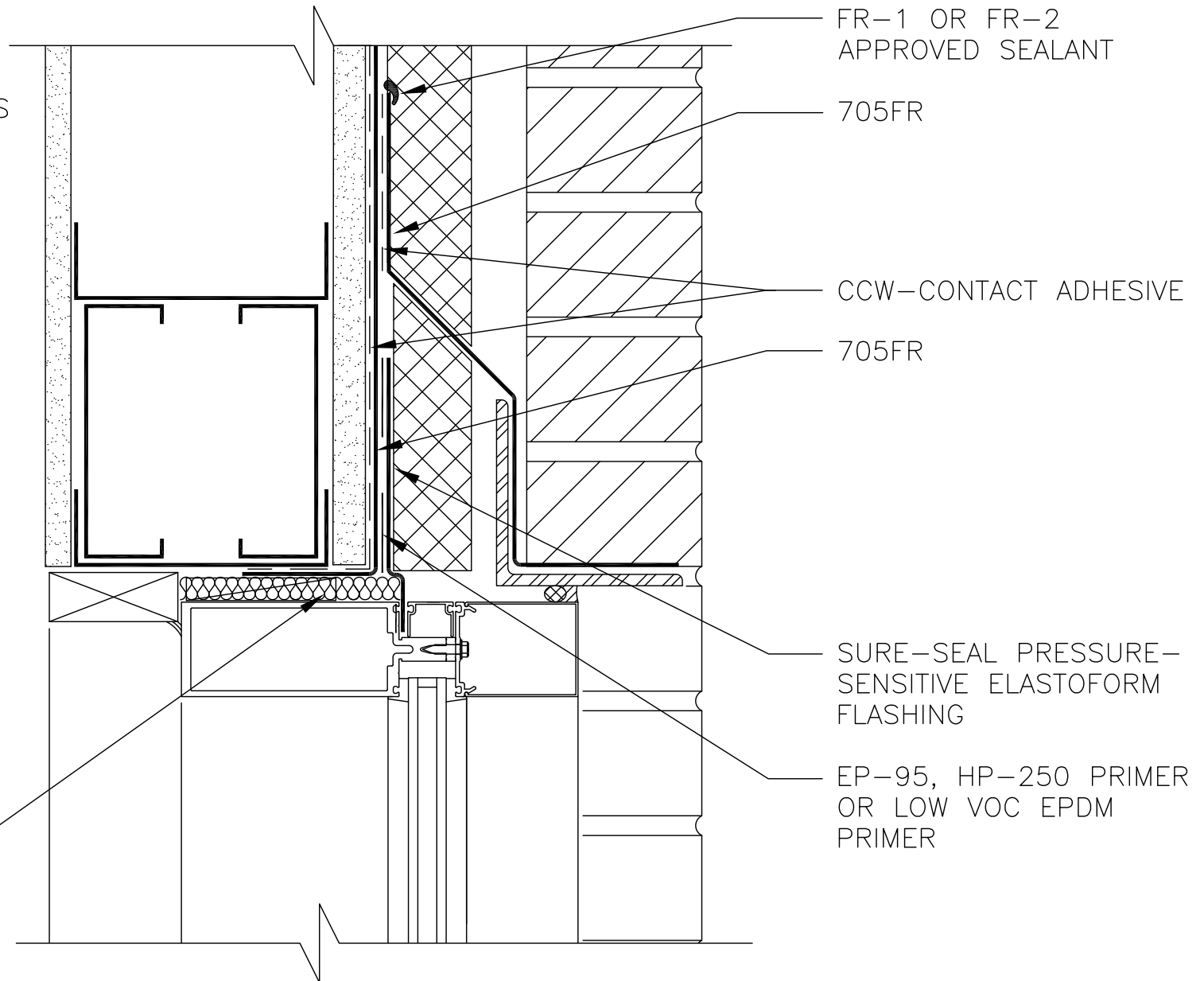
DRAWING FOR GUIDANCE. NOT FOR CONSTRUCTION

705FR-5C.2

705FR
CURTAIN WALL - JAMB

NOTES:

1. PREPARE ALL SURFACES ACCEPTING 705FR WITH CCW CONTACT ADHESIVE
2. ELASTOFORM FLASHING SHALL HAVE MINIMUM 3" FIRM BEARING ONTO WALL SURFACE
3. FILL GAP BETWEEN WINDOW AND WALL EXCEEDING 1" WITH BACKER ROD OR SPRAY FOAM SHAVED FLUSH



LOOSE FILL OR
FOAM INSULATION

FR-1 OR FR-2
APPROVED SEALANT

705FR

CCW-CONTACT ADHESIVE

705FR

SURE-SEAL PRESSURE-
SENSITIVE ELASTOFORM
FLASHING

EP-95, HP-250 PRIMER
OR LOW VOC EPDM
PRIMER

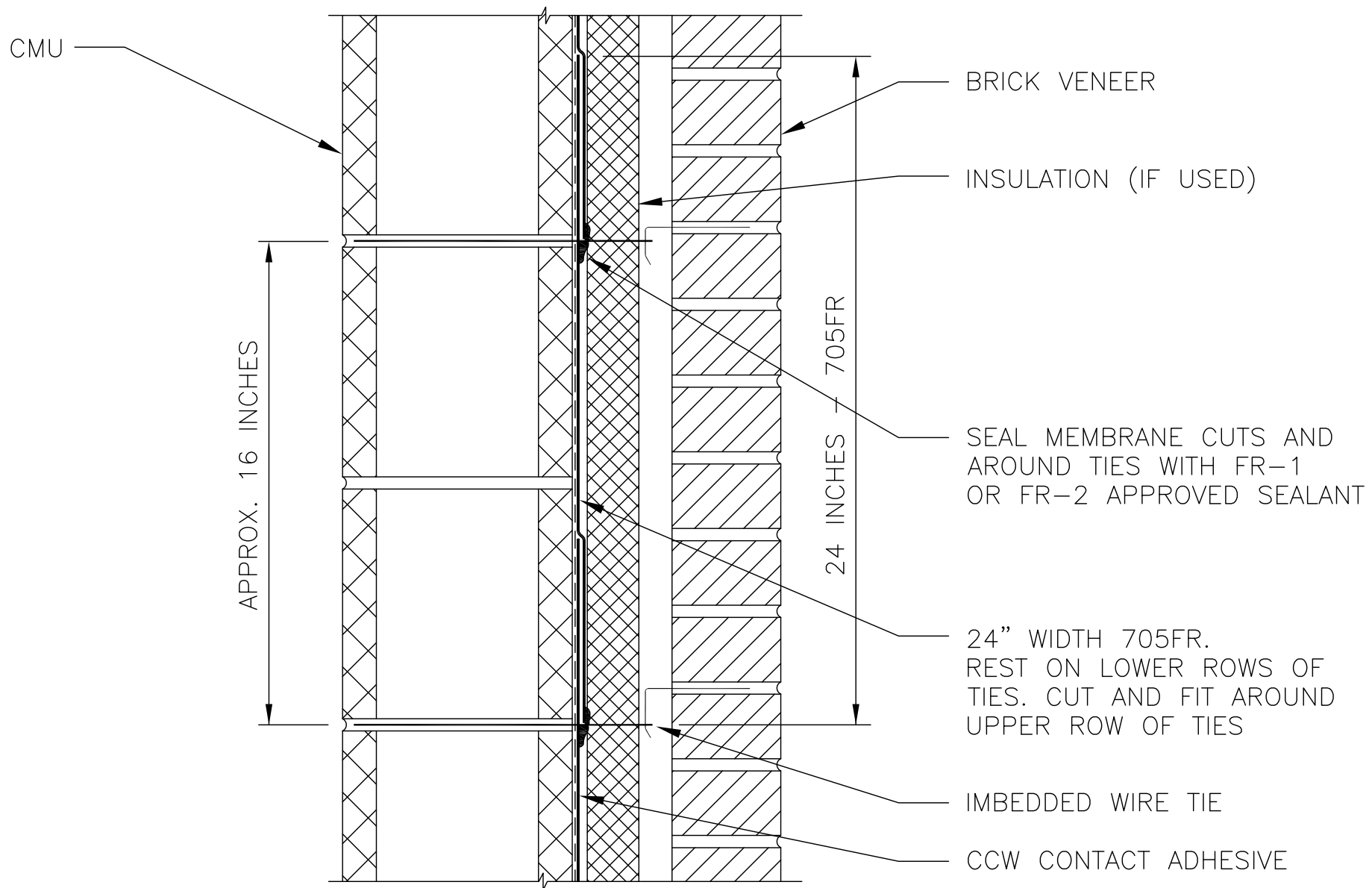
DRAWING FOR GUIDANCE. NOT FOR CONSTRUCTION

705FR-5C.3

705FR
CURTAIN WALL - HEAD

CARLISLE
COATINGS & WATERPROOFING

© 2012 CARLISLE CORPORATION



DRAWING FOR GUIDANCE. NOT FOR CONSTRUCTION

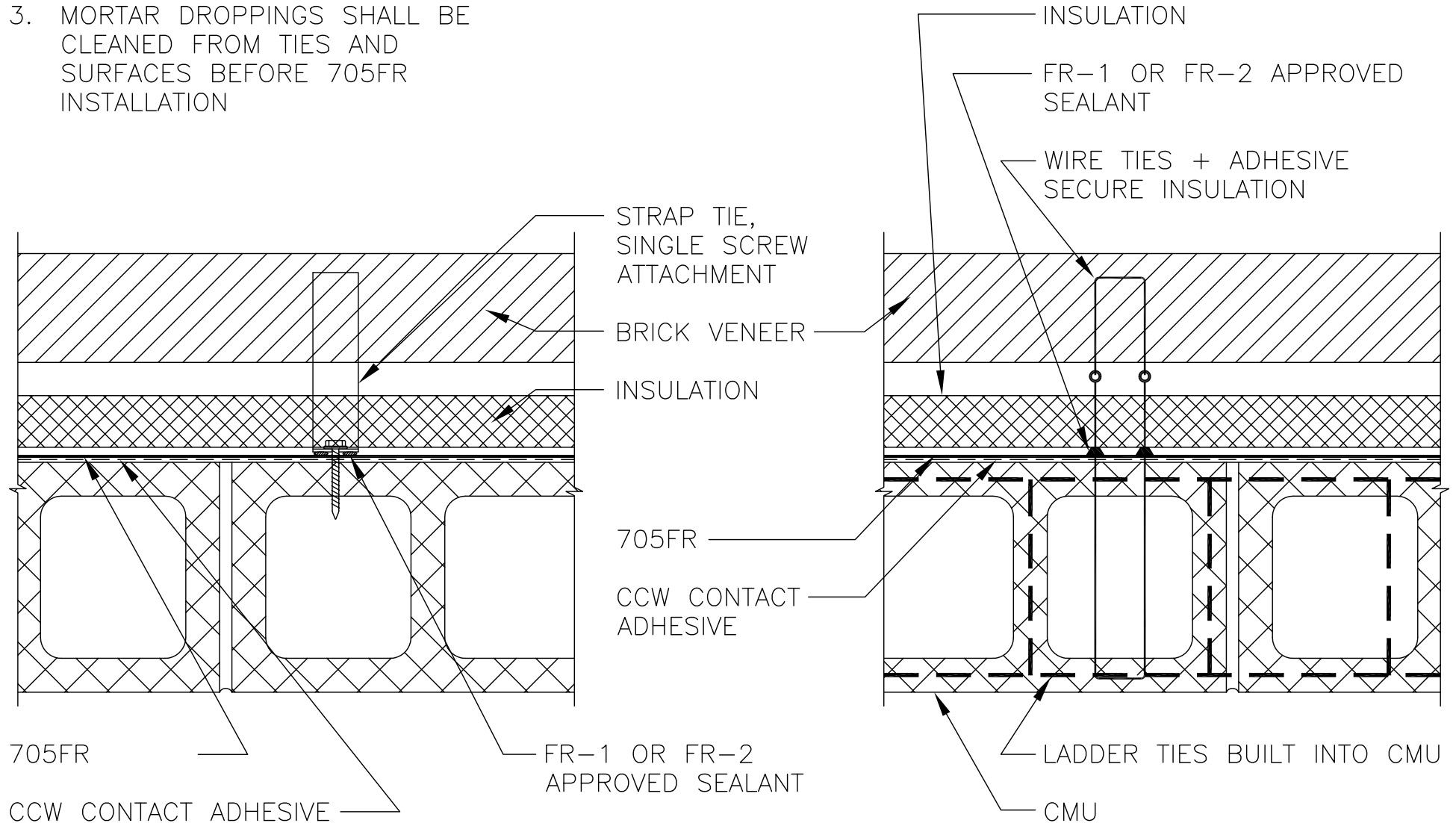
705FR-6A

705FR
INSULATION ON CMU WITH
IMBEDDED LADDER TIES

NOTES:

1. INSTALL STRAP TIES AFTER 705FR
2. MORTAR JOINTS SHALL BE STRUCK FLUSH, FREE OF VOIDS
3. MORTAR DROPPINGS SHALL BE CLEANED FROM TIES AND SURFACES BEFORE 705FR INSTALLATION

NOTE: SECURE INSULATION WITH CAV-GRIP OR FR-A APPROVED INSUL. ADHESIVE



DRAWING FOR GUIDANCE. NOT FOR CONSTRUCTION

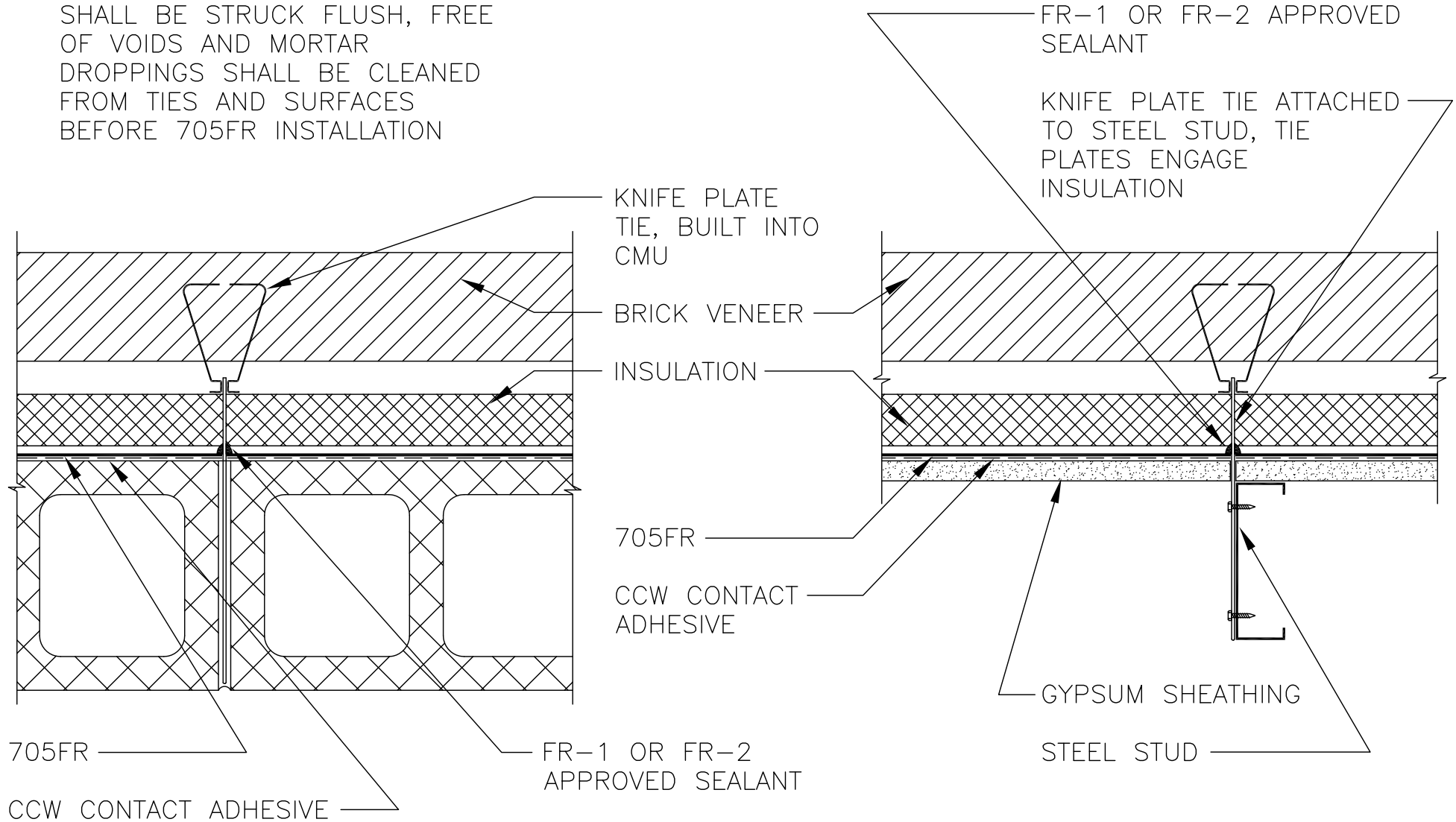
705FR-6B

705FR
BRICK TIES - CMU

NOTES:

1. TIES ARE IN PLACE BEFORE 705FR INSTALLATION
2. ON CMU – MORTAR JOINTS SHALL BE STRUCK FLUSH, FREE OF VOIDS AND MORTAR DROPPINGS SHALL BE CLEANED FROM TIES AND SURFACES BEFORE 705FR INSTALLATION

NOTE: SECURE INSULATION WITH CAV-GRIP OR FR-A APPROVED INSUL. ADHESIVE



DRAWING FOR GUIDANCE. NOT FOR CONSTRUCTION

705FR-6C

705FR
KNIFE PLATE TYPE TIES
CMU AND SHEATHING

CARLISLE
COATINGS & WATERPROOFING

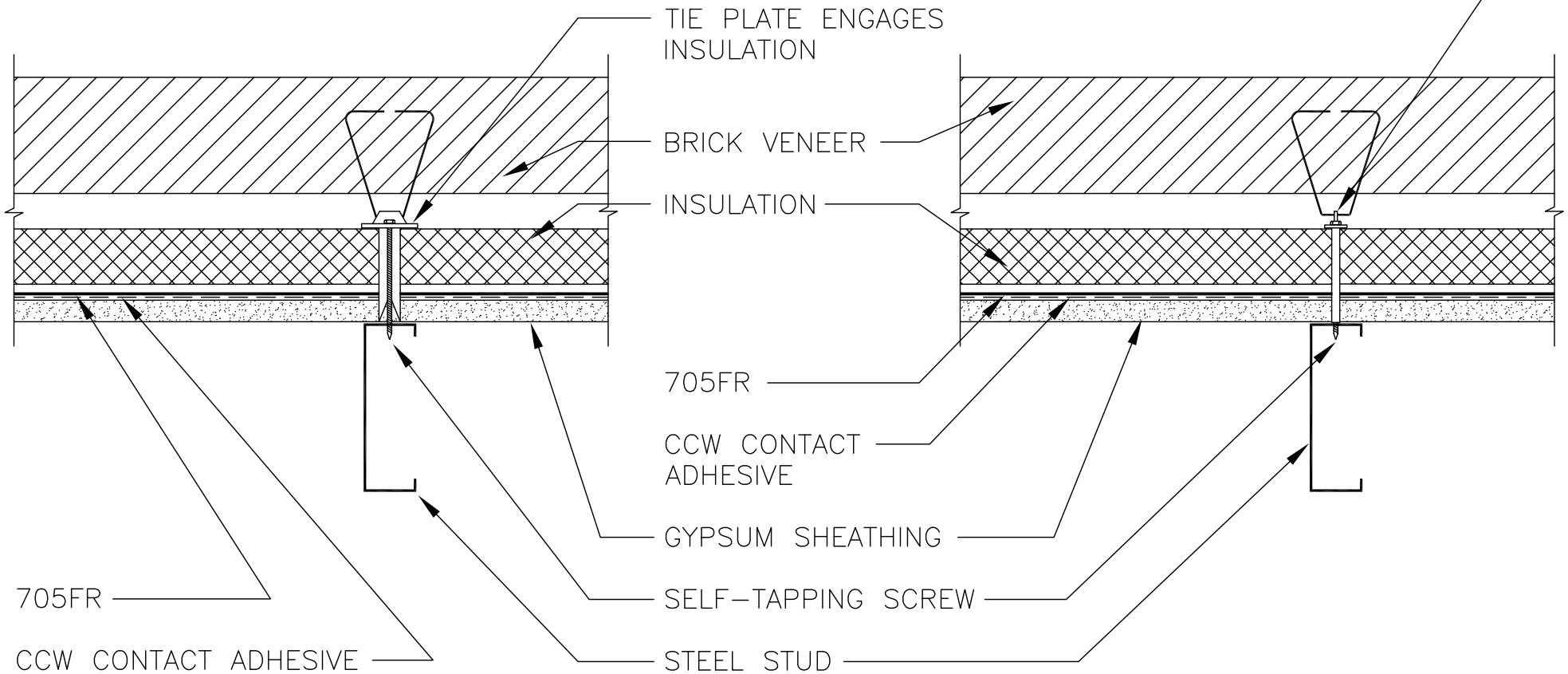
© 2012 CARLISLE CORPORATION

NOTES:

1. DRIVE FASTENERS STRAIGHT, DO NOT OVER-DRIVE
2. SEAL ALL HOLES FROM MIS-DRIVEN FASTENERS WITH PORTABLE CAN SPRAY FOAM

NOTE: SECURE INSULATION WITH CAV-GRIP OR FR-A APPROVED INSULATION ADHESIVE

SCREW-IN TYPE TIE WITH WASHER ENGAGING INSULATION



DRAWING FOR GUIDANCE. NOT FOR CONSTRUCTION

705FR-6D

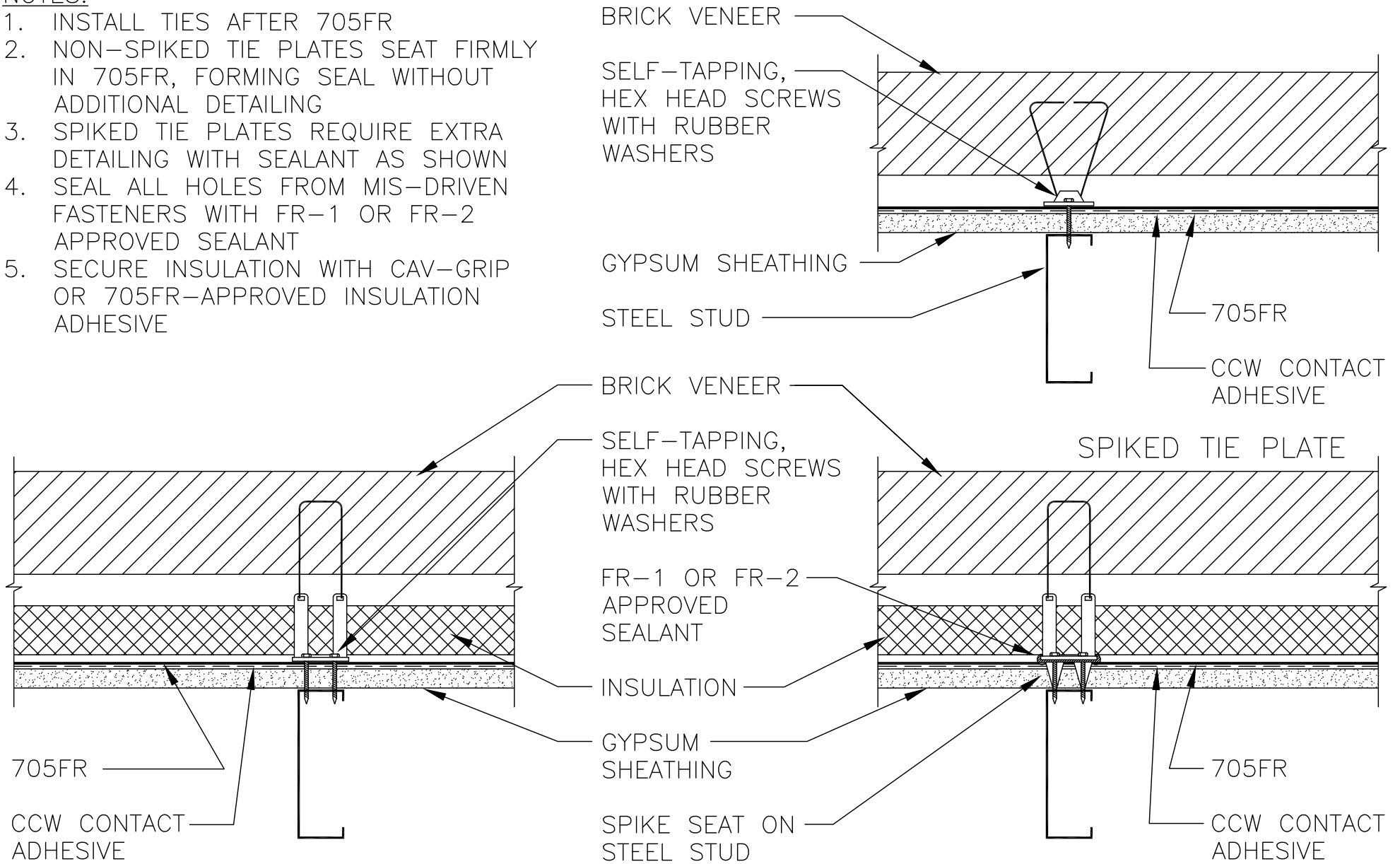
BRICK TIES, ATTACHED TO
STUD THROUGH INSULATION
AND SHEATHING

CARLISLE
COATINGS & WATERPROOFING

© 2012 CARLISLE CORPORATION

NOTES:

1. INSTALL TIES AFTER 705FR
2. NON-SPIKED TIE PLATES SEAT FIRMLY IN 705FR, FORMING SEAL WITHOUT ADDITIONAL DETAILING
3. SPIKED TIE PLATES REQUIRE EXTRA DETAILING WITH SEALANT AS SHOWN
4. SEAL ALL HOLES FROM MIS-DRIVEN FASTENERS WITH FR-1 OR FR-2 APPROVED SEALANT
5. SECURE INSULATION WITH CAV-GRIP OR 705FR-APPROVED INSULATION ADHESIVE



DRAWING FOR GUIDANCE. NOT FOR CONSTRUCTION

705FR-6E

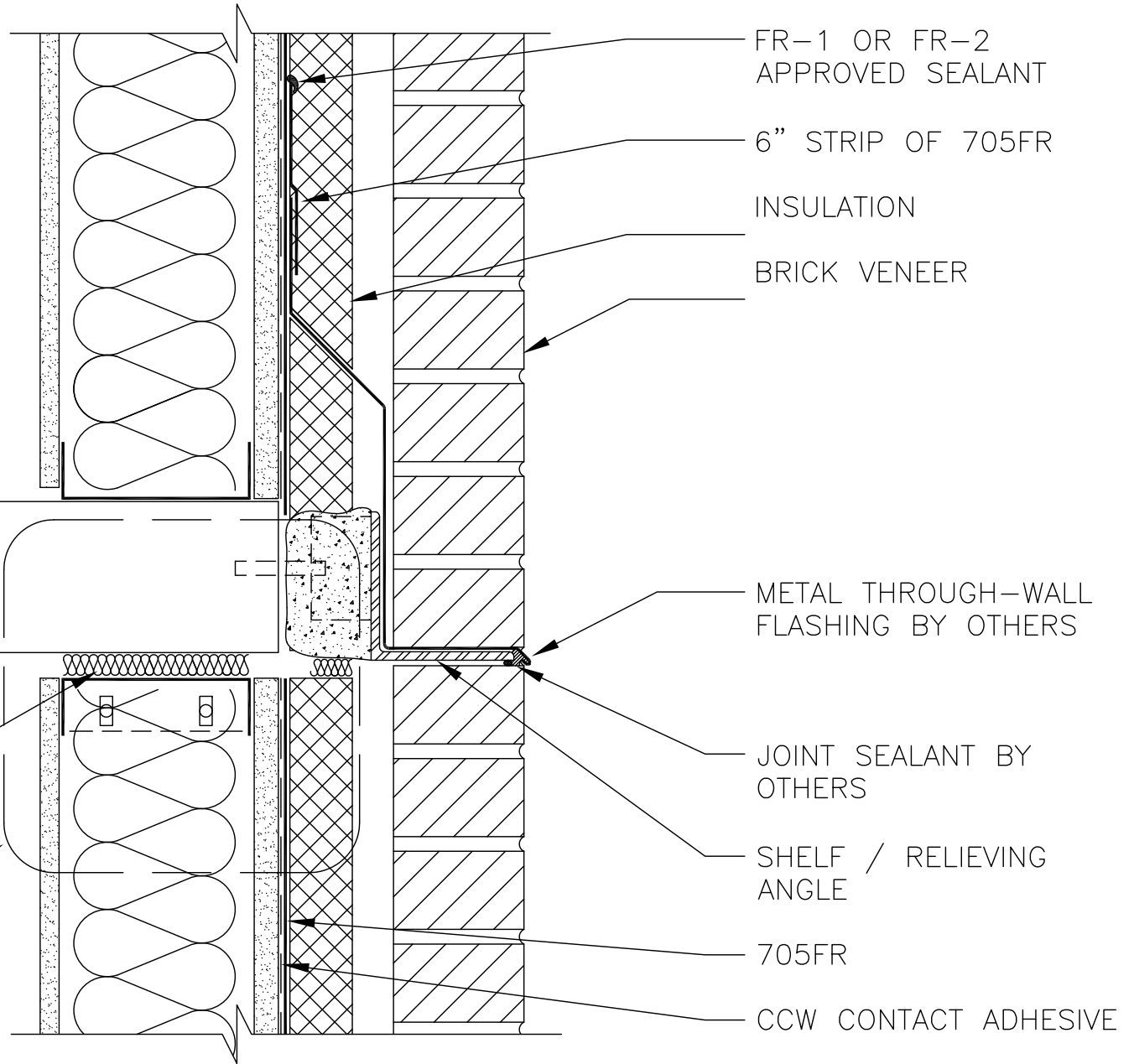
705FR
2-SCREW BRICK TIES, ATTACHMENT
TO STUD THROUGH SHEATHING

CARLISLE
COATINGS & WATERPROOFING

© 2012 CARLISLE CORPORATION

NOTES:

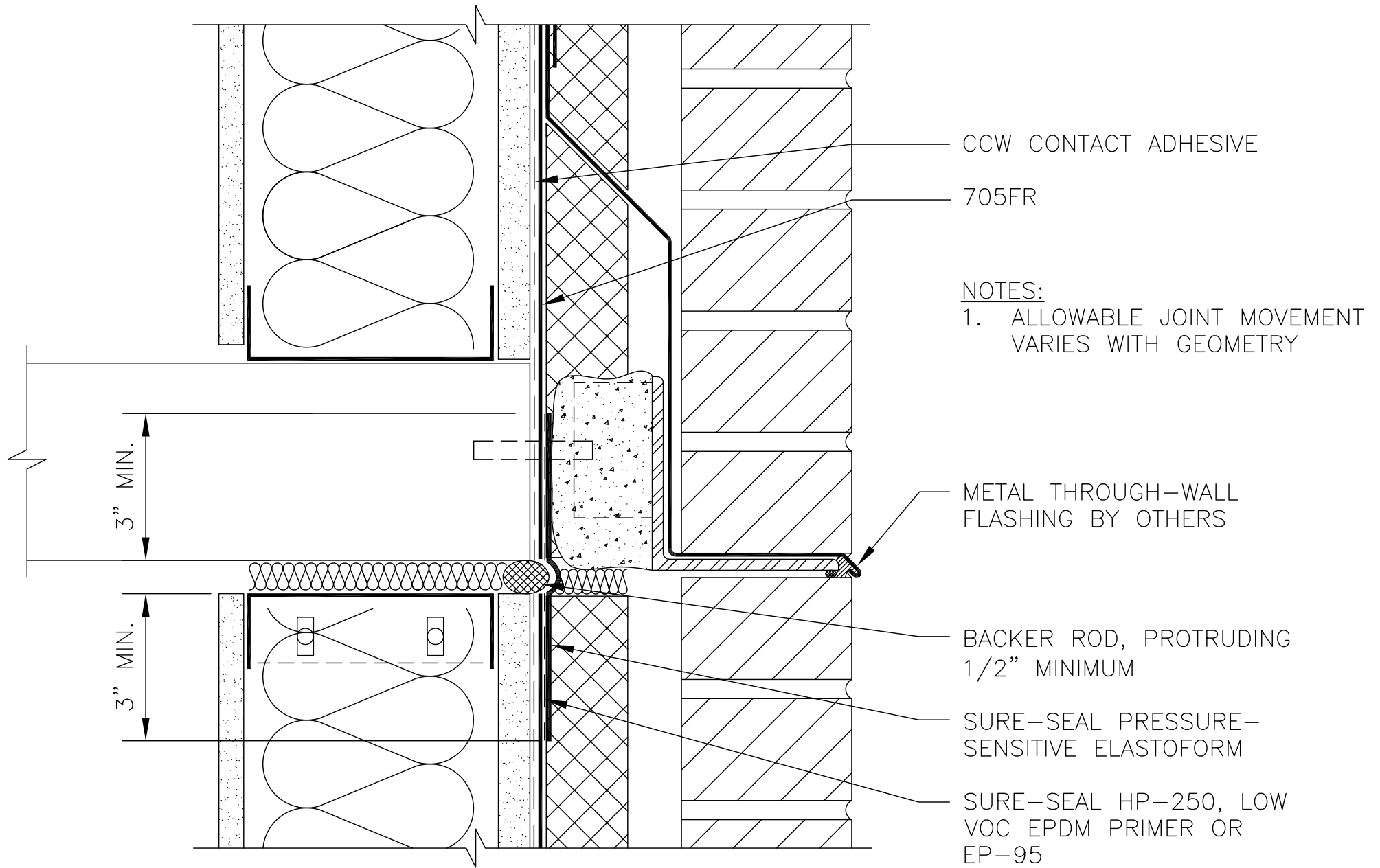
1. PREPARE ALL SURFACES ACCEPTING 705FR WITH CCW CONTACT ADHESIVE



DRAWING FOR GUIDANCE. NOT FOR CONSTRUCTION

705FR-7A

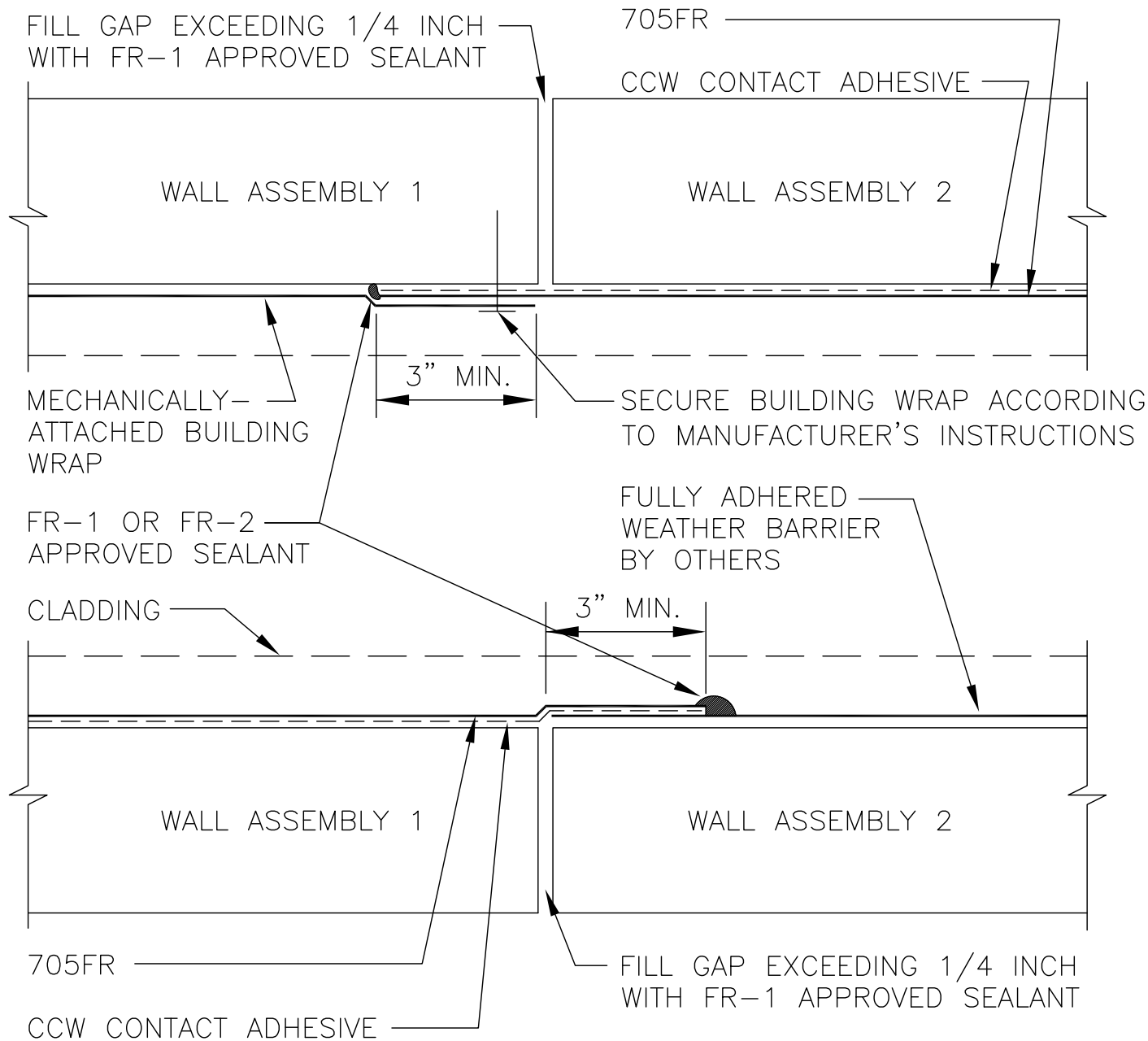
705FR
SHELF ANGLE



DRAWING FOR GUIDANCE. NOT FOR CONSTRUCTION

705FR-7B

705FR
DRIFT JOINT AT FLOOR



NOTES:

1. 705FR SHALL BEAR 3" MINIMUM ONTO EACH SIDE OF JOINT
2. INSTALL 705FR PRODUCTS TO SUBSTRATE, NOT OVER BUILDING WRAP
3. VERIFY COMPATABILITY OF MEMBRANES BY OTHERS WITH CCW

DRAWING FOR GUIDANCE. NOT FOR CONSTRUCTION

705FR-9A

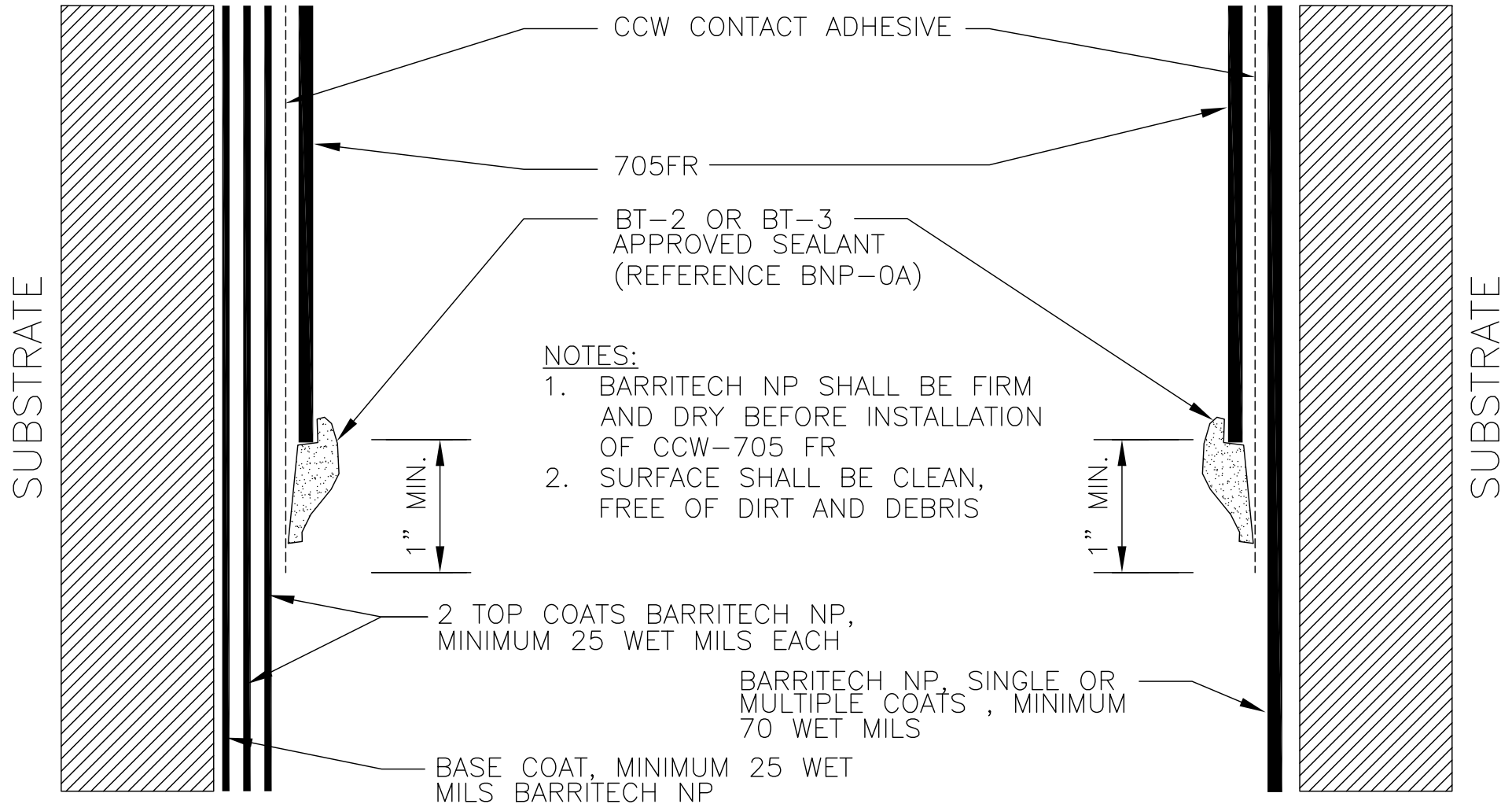
705FR TERMINATION AT WEATHER BARRIER BY OTHERS



© 2012 CARLISLE CORPORATION

705FR OVER ROLLER-
APPLIED BARRITECH NP

705FR OVER SPRAY-
APPLIED BARRITECH NP



DRAWING FOR GUIDANCE. NOT FOR CONSTRUCTION

705FR-9B

705FR TERMINATION
AT BARRITECH NP